

Product datasheet for **TA348005**

Heme Oxygenase 1 (HMOX1) Rabbit Polyclonal Antibody

Product data:

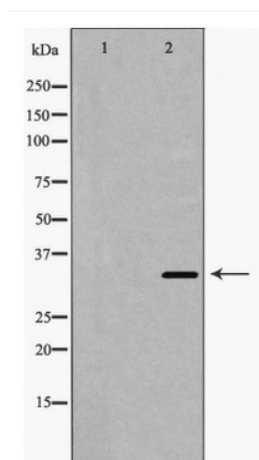
Product Type:	Primary Antibodies
Applications:	WB
Recommended Dilution:	WB: 1:500-1:2000
Reactivity:	Human, Mouse, Rat
Host:	Rabbit
Isotype:	IgG
Clonality:	Polyclonal
Immunogen:	The immunogen for anti-HO-1 Antibody: A synthesized peptide derived from human HO-1
Formulation:	Rabbit IgG in phosphate buffered saline , pH 7.4, 150mM NaCl, 0.02% sodium azide and 50% glycerol.Store at -20 ?.Stable for 12 months from date of receipt
Concentration:	lot specific
Purification:	Immunogen affinity purified
Conjugation:	Unconjugated
Storage:	Store at -20°C as received.
Stability:	Stable for 12 months from date of receipt.
Predicted Protein Size:	33 kDa
Gene Name:	heme oxygenase 1
Database Link:	NP_002124 Entrez Gene 15368 MouseEntrez Gene 24451 RatEntrez Gene 3162 Human P09601
Background:	Heme oxygenase cleaves the heme ring at the alpha methene bridge to form biliverdin. Biliverdin is subsequently converted to bilirubin by biliverdin reductase. Under physiological conditions, the activity of heme oxygenase is highest in the spleen, where senescent erythrocytes are sequestered and destroyed.
Synonyms:	bK286B10; HMOX1D; HO-1; HSP32
Note:	HO-1 Antibody detects endogenous levels of total HO-1
Protein Families:	Druggable Genome, Transmembrane



[View online »](#)

Protein Pathways: Porphyrin and chlorophyll metabolism

Product images:



Western blot analysis of HO-1 expression in fetal liver lysate