

## Product datasheet for **TA348003**

### MEF2C Rabbit Polyclonal Antibody

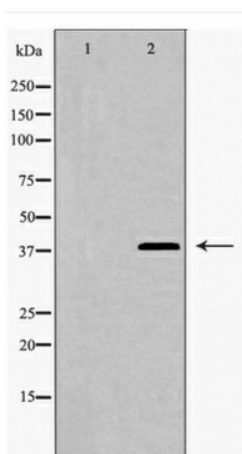
#### Product data:

Product Type:	Primary Antibodies
Applications:	WB
Reactivity:	Human, Mouse
Host:	Rabbit
Isotype:	IgG
Clonality:	Polyclonal
Immunogen:	The immunogen for anti-MEF2C Antibody: A synthesized peptide derived from human MEF2C
Formulation:	Rabbit IgG in phosphate buffered saline , pH 7.4, 150mM NaCl, 0.02% sodium azide and 50% glycerol.Store at -20 ?.Stable for 12 months from date of receipt
Concentration:	lot specific
Purification:	Immunogen affinity purified
Conjugation:	Unconjugated
Storage:	Store at -20°C as received.
Stability:	Stable for 12 months from date of receipt.
Predicted Protein Size:	51 kDa
Gene Name:	myocyte enhancer factor 2C
Database Link:	<a href="#">NP_002388</a> <a href="#">Entrez Gene 17260 Mouse</a> <a href="#">Entrez Gene 4208 Human</a> <a href="#">Q06413</a>
Background:	Transcription activator which binds specifically to the MEF2 element present in the regulatory regions of many muscle-specific genes. Controls cardiac morphogenesis and myogenesis, and is also involved in vascular development.
Synonyms:	C5DELq14.3; DEL5q14.3
Note:	MEF2C Antibody detects endogenous levels of total MEF2C
Protein Families:	Transcription Factors
Protein Pathways:	MAPK signaling pathway



[View online »](#)

## Product images:



Western blot analysis of LEG9 expression in HepG2 cells