

Product datasheet for **TA348001**

BMPR2 Rabbit Polyclonal Antibody

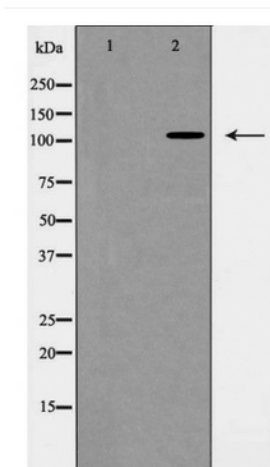
Product data:

Product Type:	Primary Antibodies
Applications:	WB
Reactivity:	Human, Mouse, Rat
Host:	Rabbit
Isotype:	IgG
Clonality:	Polyclonal
Immunogen:	The immunogen for anti-BMPR2 Antibody: A synthesized peptide derived from human BMPR2
Formulation:	Rabbit IgG in phosphate buffered saline , pH 7.4, 150mM NaCl, 0.02% sodium azide and 50% glycerol.Store at -20 ?.Stable for 12 months from date of receipt
Concentration:	lot specific
Purification:	Immunogen affinity purified
Conjugation:	Unconjugated
Storage:	Store at -20°C as received.
Stability:	Stable for 12 months from date of receipt.
Predicted Protein Size:	115 kDa
Gene Name:	bone morphogenetic protein receptor type 2
Database Link:	NP_001195 Entrez Gene 12168 Mouse Entrez Gene 140590 Rat Entrez Gene 659 Human Q13873
Background:	On ligand binding, forms a receptor complex consisting of two type II and two type I transmembrane serine/threonine kinases. Type II receptors phosphorylate and activate type I receptors which autophosphorylate, then bind and activate SMAD transcriptional regulators.
Synonyms:	BMPR-II; BMPR3; BMR2; BRK-3; POVD1; PPH1; T-ALK
Note:	BMPR2 Antibody detects endogenous levels of total BMPR2
Protein Families:	Druggable Genome, Protein Kinase, Transmembrane
Protein Pathways:	Cytokine-cytokine receptor interaction, TGF-beta signaling pathway



[View online »](#)

Product images:



Western blot analysis of BMPR2 expression in H1299 whole cell lysate