

Product datasheet for **TA348000**

Caspase-6 (CASP6) Rabbit Polyclonal Antibody

Product data:

Product Type:	Primary Antibodies
Applications:	WB
Recommended Dilution:	WB: 1:500-1:2000
Reactivity:	Human, Rat
Host:	Rabbit
Isotype:	IgG
Clonality:	Polyclonal
Immunogen:	The immunogen for anti-Caspase 6 (Cleaved-Asp179) Antibody: A synthesized peptide derived from human Caspase 6 (Cleaved-Asp179)
Formulation:	Rabbit IgG in phosphate buffered saline , pH 7.4, 150mM NaCl, 0.02% sodium azide and 50% glycerol.Store at -20 ?.Stable for 12 months from date of receipt
Concentration:	lot specific
Purification:	Immunogen affinity purified
Conjugation:	Unconjugated
Storage:	Store at -20°C as received.
Stability:	Stable for 12 months from date of receipt.
Predicted Protein Size:	18 kDa
Gene Name:	caspase 6
Database Link:	NP_001217 Entrez Gene 83584 Rat Entrez Gene 839 Human P55212
Background:	Caspase-6 (Mch2) is one of the major executioner caspases functioning in cellular apoptotic processes. Upon apoptotic stimulation, initiator caspases such as caspase-9 are cleaved and activated.
Synonyms:	MCH2
Note:	Caspase 6 (Cleaved-Asp179) Antibody detects endogenous levels of total Caspase 6 (Cleaved-Asp179)

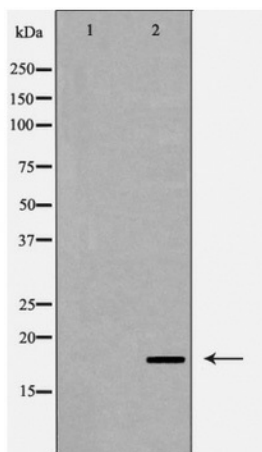


[View online »](#)

Protein Families: Druggable Genome, Protease, Stem cell - Pluripotency

Protein Pathways: Apoptosis

Product images:



Western blot analysis of Caspase 6 (Cleaved-Asp179) expression in HeLa cells