

## Product datasheet for **TA347999**

### TRAF3 Rabbit Polyclonal Antibody

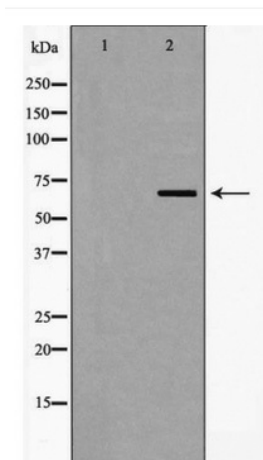
#### Product data:

Product Type:	Primary Antibodies
Applications:	WB
Reactivity:	Human, Mouse, Rat
Host:	Rabbit
Isotype:	IgG
Clonality:	Polyclonal
Immunogen:	The immunogen for anti-TRAF3 Antibody: A synthesized peptide derived from human TRAF3
Formulation:	Rabbit IgG in phosphate buffered saline , pH 7.4, 150mM NaCl, 0.02% sodium azide and 50% glycerol.Store at -20 ?.Stable for 12 months from date of receipt
Concentration:	lot specific
Purification:	Immunogen affinity purified
Conjugation:	Unconjugated
Storage:	Store at -20°C as received.
Stability:	Stable for 12 months from date of receipt.
Predicted Protein Size:	68 kDa
Gene Name:	TNF receptor associated factor 3
Database Link:	<a href="#">NP_663777</a> <a href="#">Entrez Gene 22031 Mouse</a> <a href="#">Entrez Gene 362788 Rat</a> <a href="#">Entrez Gene 7187 Human</a> <a href="#">Q13114</a>
Background:	TRAF1 and TRAF2 (for TNF receptor-associated factors 1 and 2, respectively). Both function to form heterodimeric complexes and associate with the cytoplasmic domain of TNF-R2
Synonyms:	CAP-1; CAP1; CD40bp; CRAF1; IIAE5; LAP1
Note:	TRAF3 Antibody detects endogenous levels of total TRAF3
Protein Families:	Druggable Genome
Protein Pathways:	Pathways in cancer, RIG-I-like receptor signaling pathway, Small cell lung cancer, Toll-like receptor signaling pathway



[View online »](#)

## Product images:



Western blot analysis of TRAF3 expression in NIH-3T3 cells