

Product datasheet for **TA347996**

Caveolin 1 (CAV1) Rabbit Polyclonal Antibody

Product data:

Product Type:	Primary Antibodies
Applications:	WB
Recommended Dilution:	WB: 1:500-1:2000
Reactivity:	Human
Host:	Rabbit
Isotype:	IgG
Clonality:	Polyclonal
Immunogen:	The immunogen for anti-Caveolin 1 Antibody: A synthesized peptide derived from human Caveolin 1
Formulation:	Rabbit IgG in phosphate buffered saline , pH 7.4, 150mM NaCl, 0.02% sodium azide and 50% glycerol.Store at -20 ?.Stable for 12 months from date of receipt
Concentration:	lot specific
Purification:	Immunogen affinity purified
Conjugation:	Unconjugated
Storage:	Store at -20°C as received.
Stability:	Stable for 12 months from date of receipt.
Predicted Protein Size:	20 kDa
Gene Name:	caveolin 1
Database Link:	NP_001744 Entrez Gene 857 Human Q03135
Background:	May act as a scaffolding protein within caveolar membranes. Interacts directly with G-protein alpha subunits and can functionally regulate their activity (By similarity). Involved in the costimulatory signal essential for T-cell receptor (TCR)-mediated T-cell activation. Its binding to DPP4 induces T-cell proliferation and NF-kappa-B activation in a T-cell receptor/CD3-dependent manner
Synonyms:	BSCL3; CGL3; LCCNS; MSTP085; PPH3; VIP21



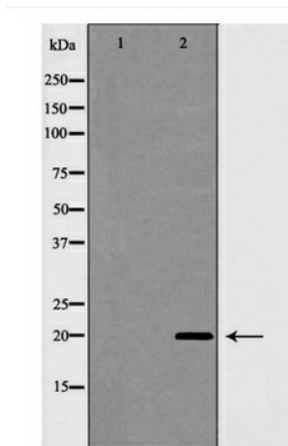
[View online »](#)

Note: Caveolin 1 Antibody detects endogenous levels of total Caveolin 1

Protein Families: Druggable Genome, Transmembrane

Protein Pathways: Focal adhesion, Viral myocarditis

Product images:



Western blot analysis of Caveolin 1 expression in HuvEc cell extracts