

Product datasheet for **TA347994**

RAN Rabbit Polyclonal Antibody

Product data:

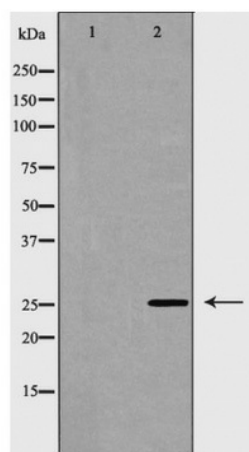
Product Type:	Primary Antibodies
Applications:	WB
Recommended Dilution:	WB: 1:500-1:2000
Reactivity:	Human, Mouse, Rat
Host:	Rabbit
Isotype:	IgG
Clonality:	Polyclonal
Immunogen:	The immunogen for anti-RAN Antibody: A synthesized peptide derived from human RAN
Formulation:	Rabbit IgG in phosphate buffered saline , pH 7.4, 150mM NaCl, 0.02% sodium azide and 50% glycerol.Store at -20 ?.Stable for 12 months from date of receipt
Concentration:	lot specific
Purification:	Immunogen affinity purified
Conjugation:	Unconjugated
Storage:	Store at -20°C as received.
Stability:	Stable for 12 months from date of receipt.
Predicted Protein Size:	26 kDa
Gene Name:	RAN, member RAS oncogene family
Database Link:	NP_006316 Entrez Gene 19384 MouseEntrez Gene 84509 RatEntrez Gene 5901 Human P62826
Background:	GTP-binding protein involved in nucleocytoplasmic transport. Required for the import of protein into the nucleus and also for RNA export. Involved in chromatin condensation and control of cell cycle (By similarity). The complex with BIRC5/ survivin plays a role in mitotic spindle formation by serving as a physical scaffold to help deliver the RAN effector molecule TPX2 to microtubules.
Synonyms:	ARA24; Gsp1; TC4
Note:	RAN Antibody detects endogenous levels of total RAN



[View online »](#)

Protein Families: Druggable Genome, Transcription Factors

Product images:



Western blot analysis of RAN expression in LOVO cells