

## Product datasheet for **TA347989**

### Cyclin F (CCNF) Rabbit Polyclonal Antibody

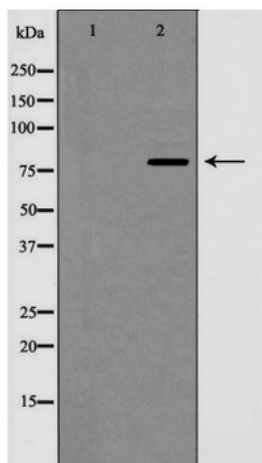
#### Product data:

Product Type:	Primary Antibodies
Applications:	WB
Recommended Dilution:	WB: 1:500-1:2000
Reactivity:	Human
Host:	Rabbit
Isotype:	IgG
Clonality:	Polyclonal
Immunogen:	The immunogen for anti-Cyclin F Antibody: A synthesized peptide derived from human Cyclin F
Formulation:	Rabbit IgG in phosphate buffered saline , pH 7.4, 150mM NaCl, 0.02% sodium azide and 50% glycerol.Store at -20 ?.Stable for 12 months from date of receipt
Concentration:	lot specific
Purification:	Immunogen affinity purified
Conjugation:	Unconjugated
Storage:	Store at -20°C as received.
Stability:	Stable for 12 months from date of receipt.
Predicted Protein Size:	87 kDa
Gene Name:	cyclin F
Database Link:	<a href="#">NP_001752</a> <a href="#">Entrez Gene 899 Human</a> <a href="#">P41002</a>
Background:	Substrate recognition component of a SCF (SKP1-CUL1-F-box protein) E3 ubiquitin-protein ligase complex which mediates the ubiquitination and subsequent proteasomal degradation of CP110 during G2 phase, thereby acting as an inhibitor of centrosome reduplication
Synonyms:	FBX1; FBXO1
Note:	Cyclin F Antibody detects endogenous levels of total Cyclin F
Protein Families:	Druggable Genome



[View online »](#)

## Product images:



Western blot analysis of Cyclin F expression in extracts from HeLa cells