

Product datasheet for **TA347988**

p18 INK4c (CDKN2C) Rabbit Polyclonal Antibody

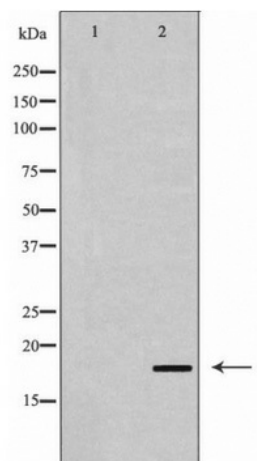
Product data:

Product Type:	Primary Antibodies
Applications:	WB
Recommended Dilution:	WB: 1:500-1:2000
Reactivity:	Human, Mouse, Rat
Host:	Rabbit
Isotype:	IgG
Clonality:	Polyclonal
Immunogen:	The immunogen for anti-p18 INK Antibody: A synthesized peptide derived from human p18 INK
Formulation:	Rabbit IgG in phosphate buffered saline , pH 7.4, 150mM NaCl, 0.02% sodium azide and 50% glycerol.Store at -20 ?.Stable for 12 months from date of receipt
Concentration:	lot specific
Purification:	Immunogen affinity purified
Conjugation:	Unconjugated
Storage:	Store at -20°C as received.
Stability:	Stable for 12 months from date of receipt.
Predicted Protein Size:	18 kDa
Gene Name:	cyclin-dependent kinase inhibitor 2C
Database Link:	NP_523240 Entrez Gene 12580 Mouse Entrez Gene 54238 Rat Entrez Gene 1031 Human P42773
Background:	Interacts strongly with CDK6, weakly with CDK4. Inhibits cell growth and proliferation with a correlated dependence on endogenous retinoblastoma protein RB.
Synonyms:	INK4C; p18; p18-INK4C
Note:	p18 INK Antibody detects endogenous levels of total p18 INK
Protein Families:	Druggable Genome
Protein Pathways:	Cell cycle



[View online »](#)

Product images:



Western blot analysis of p18 INK expression in Cos7 cell extract