

Product datasheet for **TA347986**

Claudin 4 (CLDN4) Rabbit Polyclonal Antibody

Product data:

Product Type:	Primary Antibodies
Applications:	WB
Recommended Dilution:	WB: 1:500-1:2000
Reactivity:	Human, Mouse, Rat
Host:	Rabbit
Isotype:	IgG
Clonality:	Polyclonal
Immunogen:	The immunogen for anti-Claudin 4 Antibody: A synthesized peptide derived from human Claudin 4
Formulation:	Rabbit IgG in phosphate buffered saline , pH 7.4, 150mM NaCl, 0.02% sodium azide and 50% glycerol.Store at -20 ?.Stable for 12 months from date of receipt
Concentration:	lot specific
Purification:	Immunogen affinity purified
Conjugation:	Unconjugated
Storage:	Store at -20°C as received.
Stability:	Stable for 12 months from date of receipt.
Predicted Protein Size:	22 kDa
Gene Name:	claudin 4
Database Link:	NP_001296 Entrez Gene 12740 Mouse Entrez Gene 304407 Rat Entrez Gene 1364 Human O14493
Background:	Note=CLDN4 is located in the Williams-Beuren syndrome (WBS) critical region. WBS results from a hemizygous deletion of several genes on chromosome 7q11.23, thought to arise as a consequence of unequal crossing over between highly homologous low-copy repeat sequences flanking the deleted region.
Synonyms:	CPE-R; CPER; CPETR; CPETR1; hCPE-R; WBSCR8
Note:	Claudin 4 Antibody detects endogenous levels of total Claudin 4

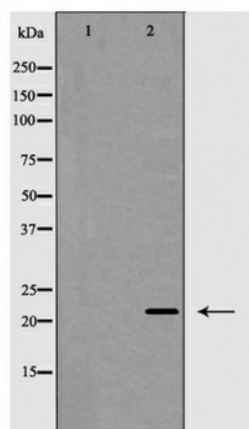


[View online »](#)

Protein Families: Druggable Genome, Transmembrane

Protein Pathways: Cell adhesion molecules (CAMs), Leukocyte transendothelial migration, Tight junction

Product images:



Western blot analysis of Claudin 4 expression in HeLa cells