

## Product datasheet for **TA347984**

### Integrin beta 4 (ITGB4) Rabbit Polyclonal Antibody

#### Product data:

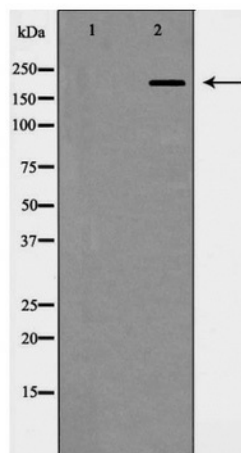
Product Type:	Primary Antibodies
Applications:	WB
Recommended Dilution:	WB: 1:500-1:2000
Reactivity:	Human, Mouse, Rat
Host:	Rabbit
Isotype:	IgG
Clonality:	Polyclonal
Immunogen:	The immunogen for anti-Integrin $\beta$ 4 Antibody: A synthesized peptide derived from human Integrin $\beta$ 4
Formulation:	Rabbit IgG in phosphate buffered saline , pH 7.4, 150mM NaCl, 0.02% sodium azide and 50% glycerol.Store at -20 ?.Stable for 12 months from date of receipt
Concentration:	lot specific
Purification:	Immunogen affinity purified
Conjugation:	Unconjugated
Storage:	Store at -20°C as received.
Stability:	Stable for 12 months from date of receipt.
Predicted Protein Size:	202 kDa
Gene Name:	integrin subunit beta 4
Database Link:	<a href="#">NP_001005619</a> <a href="#">Entrez Gene 25724 Rat</a> <a href="#">Entrez Gene 192897 Mouse</a> <a href="#">Entrez Gene 3691 Human P16144</a>
Background:	Integrin alpha-6/beta-4 is predominantly expressed by epithelia. Isoform beta-4D is also expressed in colon and placenta. Isoform beta-4E is also expressed in epidermis, lung, duodenum, heart, spleen and stomach.
Synonyms:	CD104; GP150
Note:	Integrin $\beta$ 4 Antibody detects endogenous levels of total Integrin $\beta$ 4
Protein Families:	Druggable Genome



[View online »](#)

**Protein Pathways:**

Arrhythmogenic right ventricular cardiomyopathy (ARVC), Dilated cardiomyopathy, ECM-receptor interaction, Focal adhesion, Hypertrophic cardiomyopathy (HCM), Regulation of actin cytoskeleton

**Product images:**

Western blot analysis of Integrin  $\beta$ 4 expression in HepG2 cells