

Product datasheet for **TA347982**

DNA PKcs (PRKDC) Rabbit Polyclonal Antibody

Product data:

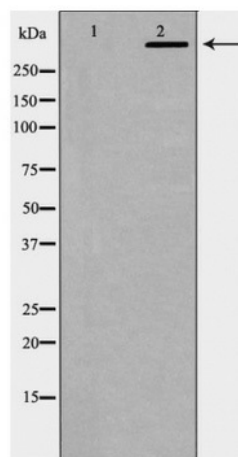
Product Type:	Primary Antibodies
Applications:	WB
Recommended Dilution:	WB: 1:500-1:2000
Reactivity:	Human, Mouse
Host:	Rabbit
Isotype:	IgG
Clonality:	Polyclonal
Immunogen:	The immunogen for anti-DNA PK Antibody: A synthesized peptide derived from human DNA PK
Formulation:	Rabbit IgG in phosphate buffered saline , pH 7.4, 150mM NaCl, 0.02% sodium azide and 50% glycerol.Store at -20 ?.Stable for 12 months from date of receipt
Concentration:	lot specific
Purification:	Immunogen affinity purified
Conjugation:	Unconjugated
Storage:	Store at -20°C as received.
Stability:	Stable for 12 months from date of receipt.
Predicted Protein Size:	469 kDa
Gene Name:	protein kinase, DNA-activated, catalytic polypeptide
Database Link:	NP_001075109 Entrez Gene 19090 Mouse Entrez Gene 5591 Human P78527
Background:	Serine/threonine-protein kinase that acts as a molecular sensor for DNA damage. Involved in DNA nonhomologous end joining (NHEJ) required for double-strand break (DSB) repair and V(D)J recombination. Must be bound to DNA to express its catalytic properties.
Synonyms:	DNA-PKcs; DNAPK; DNPK1; HYRC; HYRC1; IMD26; p350; XRCC7
Note:	DNA PK Antibody detects endogenous levels of total DNA PK
Protein Families:	Druggable Genome, Protein Kinase



[View online »](#)

Protein Pathways: Cell cycle, Non-homologous end-joining

Product images:



Western blot analysis of DNA PK expression in K562 cells