

## Product datasheet for TA347981

### GJA1 Rabbit Polyclonal Antibody

#### Product data:

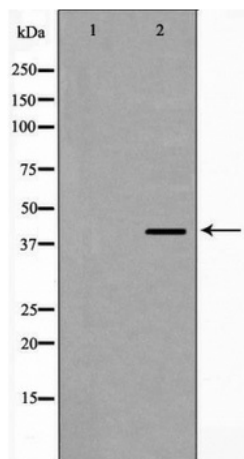
Product Type:	Primary Antibodies
Applications:	WB
Recommended Dilution:	WB: 1:500-1:2000
Reactivity:	Human, Mouse, Rat
Host:	Rabbit
Isotype:	IgG
Clonality:	Polyclonal
Immunogen:	The immunogen for anti-Connexin 43 Antibody: A synthesized peptide derived from human Connexin 43
Formulation:	Rabbit IgG in phosphate buffered saline , pH 7.4, 150mM NaCl, 0.02% sodium azide and 50% glycerol.Store at -20 ?.Stable for 12 months from date of receipt
Concentration:	lot specific
Purification:	Immunogen affinity purified
Conjugation:	Unconjugated
Storage:	Store at -20°C as received.
Stability:	Stable for 12 months from date of receipt.
Predicted Protein Size:	43 kDa
Gene Name:	gap junction protein alpha 1
Database Link:	<a href="#">NP_000156</a> <a href="#">Entrez Gene 14609 Mouse</a> <a href="#">Entrez Gene 24392 Rat</a> <a href="#">Entrez Gene 2697 Human</a> <a href="#">P17302</a>
Background:	One gap junction consists of a cluster of closely packed pairs of transmembrane channels, the connexons, through which materials of low MW diffuse from one cell to a neighboring cell.
Synonyms:	AVSD3; CMDR; CX43; EKVP; GJAL; HLHS1; HSS; ODDD; PPKCA
Note:	Connexin 43 Antibody detects endogenous levels of total Connexin 43
Protein Families:	Druggable Genome, Ion Channels: Other, Transmembrane



[View online »](#)

Protein Pathways: Arrhythmogenic right ventricular cardiomyopathy (ARVC), Gap junction

**Product images:**



Western blot analysis of Connexin 43 expression in K562 cells