

## Product datasheet for **TA347980**

### alpha 1 Catenin (CTNNA1) Rabbit Polyclonal Antibody

#### Product data:

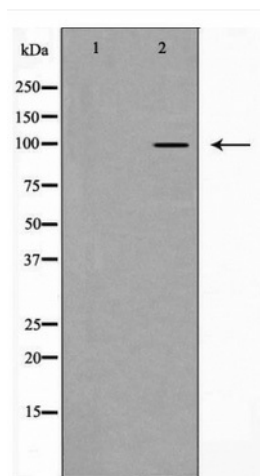
Product Type:	Primary Antibodies
Applications:	WB
Recommended Dilution:	WB: 1:1000
Reactivity:	Human, Mouse, Rat
Host:	Rabbit
Isotype:	IgG
Clonality:	Polyclonal
Immunogen:	The immunogen for anti-Catenin a1 Antibody: A synthesized peptide derived from human Catenin-a.
Formulation:	Rabbit IgG in phosphate buffered saline , pH 7.4, 150mM NaCl, 0.02% sodium azide and 50% glycerol.Store at -20 ?.Stable for 12 months from date of receipt
Concentration:	lot specific
Purification:	Immunogen affinity purified
Conjugation:	Unconjugated
Storage:	Store at -20°C as received.
Stability:	Stable for 12 months from date of receipt.
Predicted Protein Size:	100 kd
Gene Name:	catenin alpha 1
Database Link:	<a href="#">NP_001894</a> <a href="#">Entrez Gene 12385 Mouse</a> <a href="#">Entrez Gene 307505 Rat</a> <a href="#">Entrez Gene 1495 Human</a> <a href="#">P35221</a>
Background:	102 kDa cadherin-associated protein, Alpha E-catenin, CATNA1, CTN1, Cadherin-associated protein, catenin alpha-1
Synonyms:	CAP102; MDPT2
Note:	Catenin-a antibody detects endogenous levels of total Catenin-a protein.
Protein Families:	Druggable Genome



[View online »](#)

**Protein Pathways:**

Adherens junction, Arrhythmogenic right ventricular cardiomyopathy (ARVC), Endometrial cancer, Leukocyte transendothelial migration, Pathways in cancer, Tight junction

**Product images:**

Western blot analysis of Catenin a1 expression in HeLa cell lysate