

## Product datasheet for **TA347979**

### Fibronectin (FN1) Rabbit Polyclonal Antibody

#### Product data:

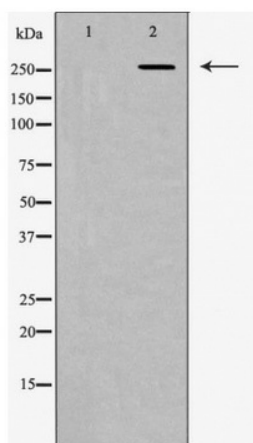
Product Type:	Primary Antibodies
Applications:	WB
Recommended Dilution:	WB: 1:500-1:2000
Reactivity:	Human, Mouse, Rat
Host:	Rabbit
Isotype:	IgG
Clonality:	Polyclonal
Immunogen:	The immunogen for anti-Fibronectin 1 Antibody: A synthesized peptide derived from human Fibronectin 1
Formulation:	Rabbit IgG in phosphate buffered saline , pH 7.4, 150mM NaCl, 0.02% sodium azide and 50% glycerol.Store at -20 ?.Stable for 12 months from date of receipt
Concentration:	lot specific
Purification:	Immunogen affinity purified
Conjugation:	Unconjugated
Storage:	Store at -20°C as received.
Stability:	Stable for 12 months from date of receipt.
Predicted Protein Size:	263 kDa
Gene Name:	fibronectin 1
Database Link:	<a href="#">NP_997639</a> <a href="#">Entrez Gene 14268 Mouse</a> <a href="#">Entrez Gene 25661 Rat</a> <a href="#">Entrez Gene 2335 Human</a> <a href="#">P02751</a>
Background:	Fibronectins bind cell surfaces and various compounds including collagen, fibrin, heparin, DNA, and actin. Fibronectins are involved in cell adhesion, cell motility, opsonization
Synonyms:	CIG; ED-B; FINC; FN; FNZ; GFND; GFND2; LETS; MSF
Note:	Fibronectin 1 Antibody detects endogenous levels of total Fibronectin 1
Protein Families:	Druggable Genome, ES Cell Differentiation/IPS, Secreted Protein



[View online »](#)

**Protein Pathways:** ECM-receptor interaction, Focal adhesion, Pathways in cancer, Regulation of actin cytoskeleton, Small cell lung cancer

**Product images:**



Western blot analysis of Fibronectin 1 expression in HeLa cells