

## Product datasheet for **TA347976**

### CSEN (KCNIP3) Rabbit Polyclonal Antibody

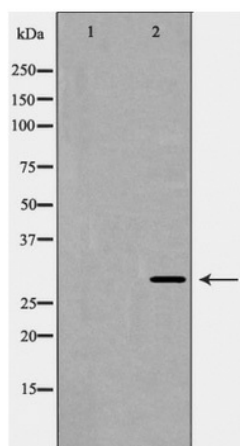
#### Product data:

Product Type:	Primary Antibodies
Applications:	WB
Recommended Dilution:	WB: 1:500-1:2000
Reactivity:	Human, Mouse
Host:	Rabbit
Isotype:	IgG
Clonality:	Polyclonal
Immunogen:	The immunogen for anti-Calsenilin/KCNIP3 Antibody: A synthesized peptide derived from human Calsenilin/KCNIP3
Formulation:	Rabbit IgG in phosphate buffered saline , pH 7.4, 150mM NaCl, 0.02% sodium azide and 50% glycerol.Store at -20 ?.Stable for 12 months from date of receipt
Concentration:	lot specific
Purification:	Immunogen affinity purified
Conjugation:	Unconjugated
Storage:	Store at -20°C as received.
Stability:	Stable for 12 months from date of receipt.
Predicted Protein Size:	29 kDa
Gene Name:	potassium voltage-gated channel interacting protein 3
Database Link:	<a href="#">NP_038462</a> <a href="#">Entrez Gene 56461 Mouse</a> <a href="#">Entrez Gene 30818 Human</a> <a href="#">Q9Y2W7</a>
Background:	Calcium-dependent transcriptional repressor that binds to the DRE element of genes including PDYN and FOS. Affinity for DNA is reduced upon binding to calcium and enhanced by binding to magnesium. Seems to be involved in nociception.
Synonyms:	CSEN; DREAM; KCHIP3
Note:	Calsenilin/KCNIP3 Antibody detects endogenous levels of total Calsenilin/KCNIP3
Protein Families:	Druggable Genome, Transcription Factors, Transmembrane



[View online »](#)

## Product images:



Western blot analysis of Calsenilin/KCNIP3 expression in A431 cells