

Product datasheet for **TA347974**

beta Synuclein (SNCB) Rabbit Polyclonal Antibody

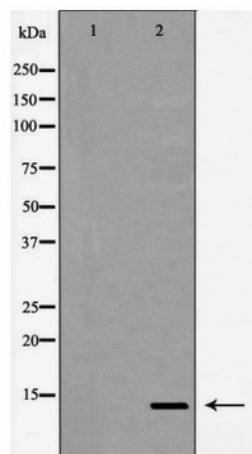
Product data:

Product Type:	Primary Antibodies
Applications:	WB
Recommended Dilution:	WB: 1:500-1:2000
Reactivity:	Human, Mouse, Rat
Host:	Rabbit
Isotype:	IgG
Clonality:	Polyclonal
Immunogen:	The immunogen for anti-Synuclein β Antibody: A synthesized peptide derived from human Synuclein β
Formulation:	Rabbit IgG in phosphate buffered saline , pH 7.4, 150mM NaCl, 0.02% sodium azide and 50% glycerol.Store at -20 $^{\circ}$?.Stable for 12 months from date of receipt
Concentration:	lot specific
Purification:	Immunogen affinity purified
Conjugation:	Unconjugated
Storage:	Store at -20 $^{\circ}$ C as received.
Stability:	Stable for 12 months from date of receipt.
Predicted Protein Size:	14 kDa
Gene Name:	synuclein beta
Database Link:	NP_003076 Entrez Gene 104069 MouseEntrez Gene 113893 RatEntrez Gene 6620 Human Q16143
Background:	Non-amyloid component of senile plaques found in Alzheimer disease. Could act as a regulator of SNCA aggregation process. Protects neurons from staurosporine and 6-hydroxy dopamine (6OHDA)-stimulated caspase activation in a p53/TP53-dependent manner.
Synonyms:	beta; beta-synuclein; synuclein
Note:	Synuclein β Antibody detects endogenous levels of total Synuclein β



[View online »](#)

Product images:



Western blot analysis of Synuclein β expression in HeLa cell lysate