

## Product datasheet for **TA347973**

### S100A4 Rabbit Polyclonal Antibody

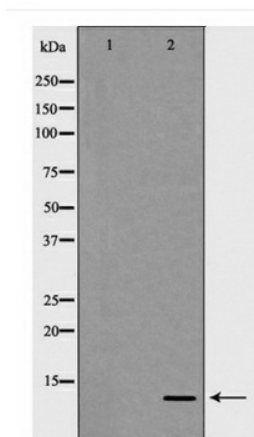
#### Product data:

Product Type:	Primary Antibodies
Applications:	WB
Recommended Dilution:	WB: 1:500-1:2000
Reactivity:	Human, Mouse, Rat
Host:	Rabbit
Isotype:	IgG
Clonality:	Polyclonal
Immunogen:	The immunogen for anti-S100 A4 Antibody: A synthesized peptide derived from human S100 A4
Formulation:	Rabbit IgG in phosphate buffered saline , pH 7.4, 150mM NaCl, 0.02% sodium azide and 50% glycerol.Store at -20 ?.Stable for 12 months from date of receipt
Concentration:	lot specific
Purification:	Immunogen affinity purified
Conjugation:	Unconjugated
Storage:	Store at -20°C as received.
Stability:	Stable for 12 months from date of receipt.
Predicted Protein Size:	12 kDa
Gene Name:	S100 calcium binding protein A4
Database Link:	<a href="#">NP_062427</a> <a href="#">Entrez Gene 20198 Mouse</a> <a href="#">Entrez Gene 24615 Rat</a> <a href="#">Entrez Gene 6275 Human</a> <a href="#">P26447</a>
Background:	Tissue specificityUbiquitously expressed.Sequence similaritiesBelongs to the S-100 family. Contains 2 EF-hand domains.
Synonyms:	18A2; 42A; CAPL; FSP1; MTS1; P9KA; PEL98
Note:	S100 A4 Antibody detects endogenous levels of total S100 A4



[View online »](#)

## Product images:



Western blot analysis of S100 A4 expression in Human Placenta lysate