

## Product datasheet for **TA347972**

### MRE11 Rabbit Polyclonal Antibody

#### Product data:

Product Type:	Primary Antibodies
Applications:	WB
Recommended Dilution:	WB: 1:500-1:2000
Reactivity:	Human, Mouse, Rat
Host:	Rabbit
Isotype:	IgG
Clonality:	Polyclonal
Immunogen:	The immunogen for anti-MRE11A Antibody: A synthesized peptide derived from human MRE11A
Formulation:	Rabbit IgG in phosphate buffered saline , pH 7.4, 150mM NaCl, 0.02% sodium azide and 50% glycerol.Store at -20 ?.Stable for 12 months from date of receipt
Concentration:	lot specific
Purification:	Immunogen affinity purified
Conjugation:	Unconjugated
Storage:	Store at -20°C as received.
Stability:	Stable for 12 months from date of receipt.
Predicted Protein Size:	80 kDa
Gene Name:	MRE11 homolog A, double strand break repair nuclease
Database Link:	<a href="#">NP_005582</a> <a href="#">Entrez Gene 17535 Mouse</a> <a href="#">Entrez Gene 64046 Rat</a> <a href="#">Entrez Gene 4361 Human</a> <a href="#">P49959</a>
Background:	Component of the MRN complex, which plays a central role in double-strand break (DSB) repair, DNA recombination, maintenance of telomere integrity and meiosis. The complex possesses single-strand endonuclease activity and double-strand-specific 3'-5' exonuclease activity
Synonyms:	ATLD; HNGS1; MRE11; MRE11B
Note:	MRE11A Antibody detects endogenous levels of total MRE11A

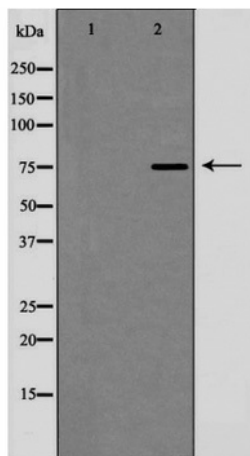


[View online »](#)

Protein Families: Druggable Genome, Stem cell - Pluripotency

Protein Pathways: Homologous recombination, Non-homologous end-joining

**Product images:**



Western blot analysis of MRE11A expression in LOVO cells