

Product datasheet for **TA347971**

GPR91 (SUCNR1) Rabbit Polyclonal Antibody

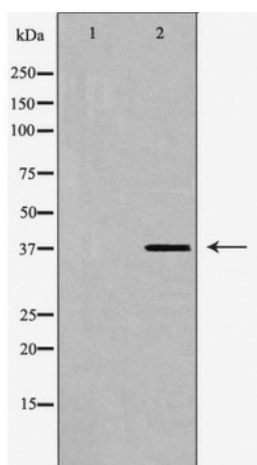
Product data:

Product Type:	Primary Antibodies
Applications:	WB
Recommended Dilution:	WB: 1:500-1:2000
Reactivity:	Human, Mouse, Rat
Host:	Rabbit
Isotype:	IgG
Clonality:	Polyclonal
Immunogen:	The immunogen for anti-SUCNR1 Antibody: A synthesized peptide derived from human SUCNR1
Formulation:	Rabbit IgG in phosphate buffered saline , pH 7.4, 150mM NaCl, 0.02% sodium azide and 50% glycerol.Store at -20 ?.Stable for 12 months from date of receipt
Concentration:	lot specific
Purification:	Immunogen affinity purified
Conjugation:	Unconjugated
Storage:	Store at -20°C as received.
Stability:	Stable for 12 months from date of receipt.
Predicted Protein Size:	38 kDa
Gene Name:	succinate receptor 1
Database Link:	NP_149039 Entrez Gene 84112 Mouse Entrez Gene 408199 Rat Entrez Gene 56670 Human Q9BXA5
Background:	FunctionReceptor for succinate.Tissue specificityExpressed specifically in kidney.Sequence similaritiesBelongs to the G-protein coupled receptor 1 family.
Synonyms:	GPR91
Note:	SUCNR1 Antibody detects endogenous levels of total SUCNR1
Protein Families:	Druggable Genome, GPCR, Transmembrane



[View online »](#)

Product images:



Western blot analysis of SUCNR1 expression in HUVEC cells