

Product datasheet for **TA347970**

Myosin light chain kinase (MYLK) Rabbit Polyclonal Antibody

Product data:

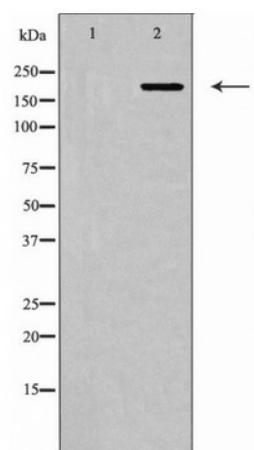
Product Type:	Primary Antibodies
Applications:	WB
Recommended Dilution:	WB: 1:500-1:2000
Reactivity:	Human, Mouse, Rat
Host:	Rabbit
Isotype:	IgG
Clonality:	Polyclonal
Immunogen:	The immunogen for anti-MYLK Antibody: A synthesized peptide derived from human MYLK
Formulation:	Rabbit IgG in phosphate buffered saline , pH 7.4, 150mM NaCl, 0.02% sodium azide and 50% glycerol.Store at -20 ?.Stable for 12 months from date of receipt
Concentration:	lot specific
Purification:	Immunogen affinity purified
Conjugation:	Unconjugated
Storage:	Store at -20°C as received.
Stability:	Stable for 12 months from date of receipt.
Predicted Protein Size:	211 kDa.
Gene Name:	myosin light chain kinase
Database Link:	NP_444259 Entrez Gene 107589 MouseEntrez Gene 288057 RatEntrez Gene 4638 Human Q15746
Background:	Calcium/calmodulin-dependent enzyme implicated in smooth muscle contraction via phosphorylation of myosin light chains (MLC). Also regulates actin-myosin interaction through a non-kinase activity (By similarity). Implicated in the regulation of endothelial as well as vascular permeability.
Synonyms:	AAT7; KRP; MLCK; MLCK1; MLCK108; MLCK210; MSTP083; MYLK1; smMLCK
Note:	MYLK Antibody detects endogenous levels of total MYLK
Protein Families:	Druggable Genome, Protein Kinase



[View online »](#)

Protein Pathways: Calcium signaling pathway, Focal adhesion, Regulation of actin cytoskeleton, Vascular smooth muscle contraction

Product images:



Western blot analysis of MYLK expression in HepG2 cells