

Product datasheet for **TA347969**

CYP1A1 Rabbit Polyclonal Antibody

Product data:

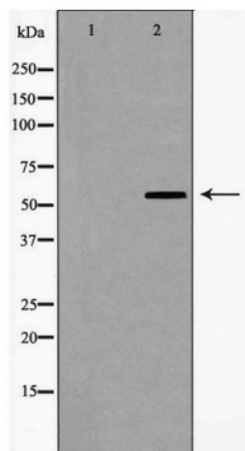
Product Type:	Primary Antibodies
Applications:	WB
Recommended Dilution:	WB: 1:500-1:2000
Reactivity:	Human, Mouse, Rat
Host:	Rabbit
Isotype:	IgG
Clonality:	Polyclonal
Immunogen:	The immunogen for anti-Cytochrome P450 1A1/2 Antibody: A synthesized peptide derived from human Cytochrome P450 1A1/2
Formulation:	Rabbit IgG in phosphate buffered saline , pH 7.4, 150mM NaCl, 0.02% sodium azide and 50% glycerol.Store at -20 ?.Stable for 12 months from date of receipt
Concentration:	lot specific
Purification:	Immunogen affinity purified
Conjugation:	Unconjugated
Storage:	Store at -20°C as received.
Stability:	Stable for 12 months from date of receipt.
Predicted Protein Size:	58 kDa
Gene Name:	cytochrome P450 family 1 subfamily A member 1
Database Link:	NP_000490 Entrez Gene 13076 Mouse Entrez Gene 24296 Rat Entrez Gene 1543 Human P04798
Background:	Cytochromes P450 are a group of heme-thiolate monooxygenases. In liver microsomes, this enzyme is involved in an NADPH-dependent electron transport pathway. It oxidizes a variety of structurally unrelated compounds, including steroids, fatty acids, and xenobiotics.
Synonyms:	AHH; AHRR; CP11; CYP1; CYP1A1; P1-450; P450-C; P450DX
Note:	Cytochrome P450 1A1/2 Antibody detects endogenous levels of total Cytochrome P450 1A1/2
Protein Families:	Druggable Genome, P450, Transmembrane



[View online »](#)

Protein Pathways: Metabolism of xenobiotics by cytochrome P450, Retinol metabolism, Tryptophan metabolism

Product images:



Western blot analysis of Cytochrome P450 1A1/2 expression in RAW264.7 cells