

Product datasheet for **TA347968**

LINC02210-CRHR1 Rabbit Polyclonal Antibody

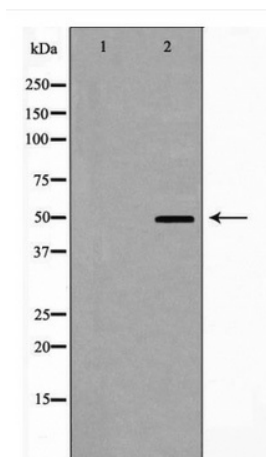
Product data:

Product Type:	Primary Antibodies
Applications:	WB
Recommended Dilution:	WB: 1:500-1:2000
Reactivity:	Human, Mouse, Rat
Host:	Rabbit
Isotype:	IgG
Clonality:	Polyclonal
Immunogen:	The immunogen for anti-CRHR1 Antibody: A synthesized peptide derived from human CRHR1
Formulation:	Rabbit IgG in phosphate buffered saline , pH 7.4, 150mM NaCl, 0.02% sodium azide and 50% glycerol.Store at -20 ?.Stable for 12 months from date of receipt
Concentration:	lot specific
Purification:	Immunogen affinity purified
Conjugation:	Unconjugated
Storage:	Store at -20°C as received.
Stability:	Stable for 12 months from date of receipt.
Predicted Protein Size:	51 kDa
Gene Name:	LINC02210-CRHR1 readthrough
Database Link:	NP_001243228 Entrez Gene 104909134 Human P34998
Background:	This is a receptor for corticotropin releasing factor. Shows high-affinity CRF binding. The activity of this receptor is mediated by G proteins which activate adenylyl cyclase.
Synonyms:	CRF-R; CRF-R-1; CRF-R1; CRF1; CRFR-1; CRFR1; CRH-R-1; CRH-R1; CRH-R1h; CRHR; CRHR1f; CRHR1L
Note:	CRHR1 Antibody detects endogenous levels of total CRHR1



[View online »](#)

Product images:



Western blot analysis of CRHR1 expression in HT-29 cells