

Product datasheet for **TA347967**

NOTCH1 Rabbit Polyclonal Antibody

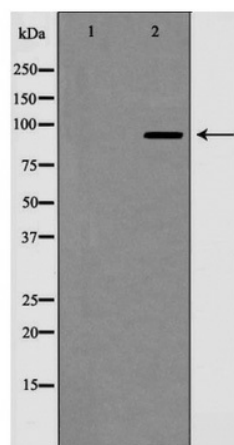
Product data:

Product Type:	Primary Antibodies
Applications:	WB
Recommended Dilution:	WB: 1:500-1:2000
Reactivity:	Human, Mouse, Rat
Host:	Rabbit
Isotype:	IgG
Clonality:	Polyclonal
Immunogen:	The immunogen for anti-Notch 1 (Cleaved-Val1744) Antibody: A synthesized peptide derived from human Notch 1 (Cleaved-Val1744)
Formulation:	Rabbit IgG in phosphate buffered saline , pH 7.4, 150mM NaCl, 0.02% sodium azide and 50% glycerol.Store at -20 ?.Stable for 12 months from date of receipt
Concentration:	lot specific
Purification:	Immunogen affinity purified
Conjugation:	Unconjugated
Storage:	Store at -20°C as received.
Stability:	Stable for 12 months from date of receipt.
Predicted Protein Size:	95 kDa
Gene Name:	notch 1
Database Link:	NP_060087 Entrez Gene 18128 Mouse Entrez Gene 25496 Rat Entrez Gene 4851 Human P46531
Background:	Functions as a receptor for membrane-bound ligands Jagged1, Jagged2 and Delta1 to regulate cell-fate determination. Upon ligand activation through the released notch intracellular domain (NICD) it forms a transcriptional activator complex with RBPJ/RBPSUH and activates genes of the enhancer of split locus
Synonyms:	AOS5; AOVD1; hN1; TAN1



[View online »](#)

- Note:** Notch 1 (Cleaved-Val1744) Antibody detects endogenous levels of total Notch 1 (Cleaved-Val1744)
- Protein Families:** Adult stem cells, Cancer stem cells, Druggable Genome, ES Cell Differentiation/IPS, Stem cell relevant signaling - DSL/Notch pathway
- Protein Pathways:** Dorso-ventral axis formation, Notch signaling pathway, Prion diseases

Product images:

Western blot analysis of Notch 1 (Cleaved-Val1744) expression in NIH 3T3 cell extract treated with etoposide