

Product datasheet for **TA347966**

Corticotropin Releasing Factor Receptor 2 (CRHR2) Rabbit Polyclonal Antibody

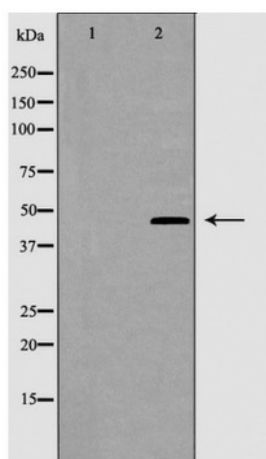
Product data:

Product Type:	Primary Antibodies
Applications:	WB
Recommended Dilution:	WB: 1:500-1:2000
Reactivity:	Human, Mouse, Rat
Host:	Rabbit
Isotype:	IgG
Clonality:	Polyclonal
Immunogen:	The immunogen for anti-CRFR2 Antibody: A synthesized peptide derived from human CRFR2
Formulation:	Rabbit IgG in phosphate buffered saline , pH 7.4, 150mM NaCl, 0.02% sodium azide and 50% glycerol.Store at -20 ?.Stable for 12 months from date of receipt
Concentration:	lot specific
Purification:	Immunogen affinity purified
Conjugation:	Unconjugated
Storage:	Store at -20°C as received.
Stability:	Stable for 12 months from date of receipt.
Predicted Protein Size:	48 kDa
Gene Name:	corticotropin releasing hormone receptor 2
Database Link:	NP_001874 Entrez Gene 12922 MouseEntrez Gene 64680 RatEntrez Gene 1395 Human Q13324
Background:	This is a receptor for corticotropin releasing factor. Shows high-affinity CRF binding. Also binds to urocortin I, II and III. The activity of this receptor is mediated by G proteins which activate adenylyl cyclase.
Synonyms:	CRF-RB; CRF2; CRFR2; HM-CRF
Note:	CRFR2 Antibody detects endogenous levels of total CRFR2
Protein Families:	Druggable Genome, Transmembrane
Protein Pathways:	Neuroactive ligand-receptor interaction



[View online »](#)

Product images:



Western blot analysis of CRHR2 expression in K562 cells