

## Product datasheet for **TA347965**

### GORASP2 Rabbit Polyclonal Antibody

#### Product data:

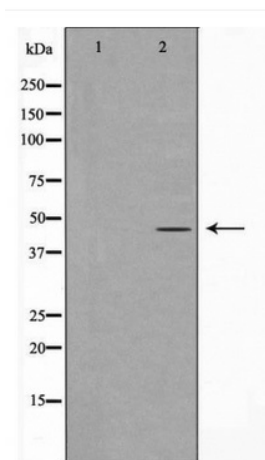
Product Type:	Primary Antibodies
Applications:	WB
Recommended Dilution:	WB: 1:500-1:2000
Reactivity:	Human, Mouse, Rat
Host:	Rabbit
Isotype:	IgG
Clonality:	Polyclonal
Immunogen:	The immunogen for anti-GORASP2 Antibody: A synthesized peptide derived from human GORASP2
Formulation:	Rabbit IgG in phosphate buffered saline , pH 7.4, 150mM NaCl, 0.02% sodium azide and 50% glycerol.Store at -20 ?.Stable for 12 months from date of receipt
Concentration:	lot specific
Purification:	Immunogen affinity purified
Conjugation:	Unconjugated
Storage:	Store at -20°C as received.
Stability:	Stable for 12 months from date of receipt.
Predicted Protein Size:	47 kDa
Gene Name:	golgi reassembly stacking protein 2
Database Link:	<a href="#">NP_056345</a> <a href="#">Entrez Gene 70231 Mouse</a> <a href="#">Entrez Gene 113961 Rat</a> <a href="#">Entrez Gene 26003 Human</a> <a href="#">Q9H8Y8</a>
Background:	May be involved in assembly and membrane stacking of the Golgi cisternae, and in the process by which Golgi stacks reform after mitotic breakdown. May regulate the intracellular transport and presentation of a defined set of transmembrane proteins, such as transmembrane TGFA.
Synonyms:	GOLPH6; GRASP55; GRS2; p59
Note:	GORASP2 Antibody detects endogenous levels of total GORASP2



[View online »](#)

Protein Families: Druggable Genome

**Product images:**



Western blot analysis of GORASP2 expression in HeLa cell extracts