

Product datasheet for **TA347962**

GPR103 (QRFP) Rabbit Polyclonal Antibody

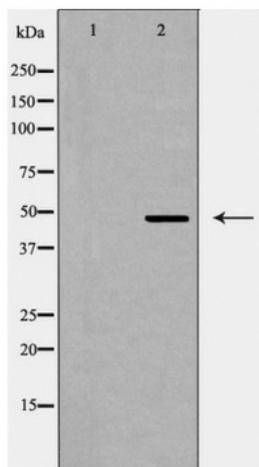
Product data:

Product Type:	Primary Antibodies
Applications:	WB
Recommended Dilution:	WB: 1:500-1:2000
Reactivity:	Human, Mouse, Rat
Host:	Rabbit
Isotype:	IgG
Clonality:	Polyclonal
Immunogen:	The immunogen for anti-GPR103 Antibody: A synthesized peptide derived from human GPR103
Formulation:	Rabbit IgG in phosphate buffered saline , pH 7.4, 150mM NaCl, 0.02% sodium azide and 50% glycerol.Store at -20 ?.Stable for 12 months from date of receipt
Concentration:	lot specific
Purification:	Immunogen affinity purified
Conjugation:	Unconjugated
Storage:	Store at -20°C as received.
Stability:	Stable for 12 months from date of receipt.
Predicted Protein Size:	49 kDa
Gene Name:	pyroglutamylated RFamide peptide receptor
Database Link:	NP_937822 Entrez Gene 229214 MouseEntrez Gene 310327 RatEntrez Gene 84109 Human Q96P65
Background:	Receptor for the orexigenic neuropeptide QRFP. The activity of this receptor is mediated by G proteins that modulate adenylate cyclase activity and intracellular calcium levels.
Synonyms:	AQ27; GPR103; SP9155
Note:	GPR103 Antibody detects endogenous levels of total GPR103
Protein Families:	Druggable Genome, GPCR, Transmembrane



[View online »](#)

Product images:



Western blot analysis of GPR103 expression in LOVO cells