

## Product datasheet for **TA347960**

### MGMT Rabbit Polyclonal Antibody

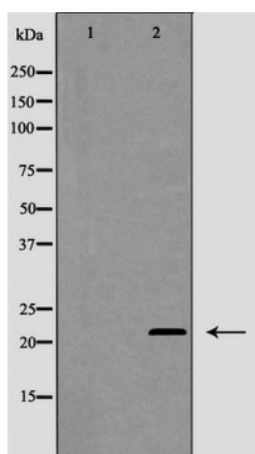
#### Product data:

Product Type:	Primary Antibodies
Applications:	WB
Recommended Dilution:	WB: 1:500-1:2000
Reactivity:	Human, Rat
Host:	Rabbit
Isotype:	IgG
Clonality:	Polyclonal
Immunogen:	The immunogen for anti-MGMT Antibody: A synthesized peptide derived from human MGMT
Formulation:	Rabbit IgG in phosphate buffered saline , pH 7.4, 150mM NaCl, 0.02% sodium azide and 50% glycerol.Store at -20 ?.Stable for 12 months from date of receipt
Concentration:	lot specific
Purification:	Immunogen affinity purified
Conjugation:	Unconjugated
Storage:	Store at -20°C as received.
Stability:	Stable for 12 months from date of receipt.
Predicted Protein Size:	22 kDa
Gene Name:	O-6-methylguanine-DNA methyltransferase
Database Link:	<a href="#">NP_002403</a> <a href="#">Entrez Gene 25332 Rat</a> <a href="#">Entrez Gene 4255 Human</a> <a href="#">P16455</a>
Background:	MGMT (O6 methylguanine DNA methyltransferase) is an enzyme that transfers methyl groups from O(6) methylguanine, and other methylated moieties of DNA, to a cysteine residue in itself, thus repairing DNA damage caused by alkylation in a single step reaction.
Synonyms:	methylguanine-DNA methyltransferase; O-6-methylguanine-DNA methyltransferase; O6-methylguanine-DNA methyltransferase; OTTHUMP00000020741
Note:	MGMT Antibody detects endogenous levels of total MGMT
Protein Families:	Druggable Genome



[View online »](#)

## Product images:



Western blot analysis of MGMT expression in Jurkat cells.