

Product datasheet for **TA347958**

Bim (BCL2L11) Rabbit Polyclonal Antibody

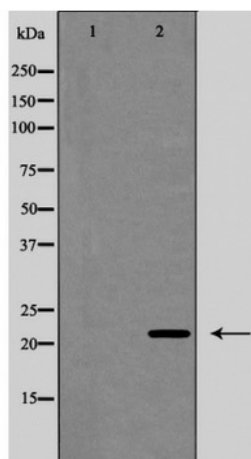
Product data:

Product Type:	Primary Antibodies
Applications:	WB
Recommended Dilution:	WB: 1:500-1:2000
Reactivity:	Human, Mouse, Rat
Host:	Rabbit
Isotype:	IgG
Clonality:	Polyclonal
Immunogen:	The immunogen for anti-BIM Antibody: A synthesized peptide derived from human BIM
Formulation:	Rabbit IgG in phosphate buffered saline , pH 7.4, 150mM NaCl, 0.02% sodium azide and 50% glycerol.Store at -20 ?.Stable for 12 months from date of receipt
Concentration:	lot specific
Purification:	Immunogen affinity purified
Conjugation:	Unconjugated
Storage:	Store at -20°C as received.
Stability:	Stable for 12 months from date of receipt.
Predicted Protein Size:	22 kDa
Gene Name:	BCL2 like 11
Database Link:	NP_006529 Entrez Gene 12125 MouseEntrez Gene 64547 RatEntrez Gene 10018 Human O43521
Background:	Induces apoptosis. Isoform BimL is more potent than isoform BimEL. Isoform Bim-alpha1, isoform Bim-alpha2 and isoform Bim-alpha3 induce apoptosis, although less potent than the isoforms BimEL, BimL and BimS. Isoform Bim-gamma induces apoptosis.
Synonyms:	BAM; BIM; BOD
Note:	BIM Antibody detects endogenous levels of total BIM
Protein Families:	Druggable Genome



[View online »](#)

Product images:



Western blot analysis of BIM expression in COS7 cells