

Product datasheet for **TA347954**

DDIT3 Rabbit Polyclonal Antibody

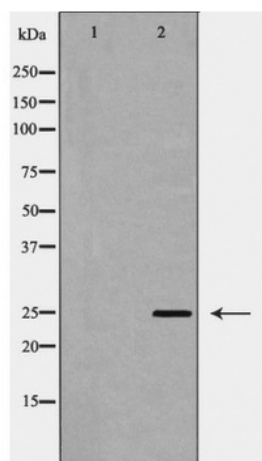
Product data:

Product Type:	Primary Antibodies
Applications:	WB
Recommended Dilution:	WB: 1:500-1:2000
Reactivity:	Human, Mouse
Host:	Rabbit
Isotype:	IgG
Clonality:	Polyclonal
Immunogen:	The immunogen for anti-CHOP antibody: A synthesized peptide derived from human CHOP
Formulation:	Rabbit IgG in phosphate buffered saline , pH 7.4, 150mM NaCl, 0.02% sodium azide and 50% glycerol.Store at -20 ?.Stable for 12 months from date of receipt
Concentration:	lot specific
Purification:	Immunogen affinity purified
Conjugation:	Unconjugated
Storage:	Store at -20°C as received.
Stability:	Stable for 12 months from date of receipt.
Predicted Protein Size:	25 kDa
Gene Name:	DNA damage inducible transcript 3
Database Link:	NP_004074 Entrez Gene 13198 Mouse Entrez Gene 1649 Human P35638
Background:	Inhibits the DNA-binding activity of C/EBP and LAP by forming heterodimers that cannot bind DNA.
Synonyms:	CEBPZ; CHOP; CHOP-10; CHOP10; GADD153
Note:	CHOP antibody detects endogenous levels of total CHOP
Protein Families:	Druggable Genome, Transcription Factors
Protein Pathways:	MAPK signaling pathway



[View online »](#)

Product images:



Western blot analysis of CHOP expression in Jurkat cell lysate