

Product datasheet for **TA347952**

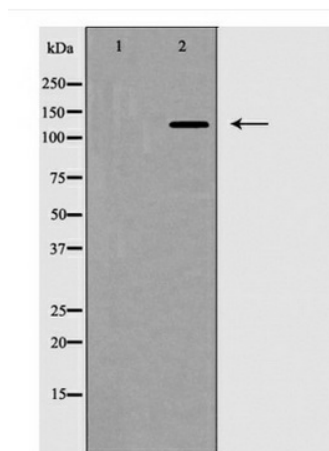
Smad Interacting Protein 1 (ZEB2) Rabbit Polyclonal Antibody

Product data:

Product Type:	Primary Antibodies
Applications:	WB
Recommended Dilution:	WB: 1:500-1:2000
Reactivity:	Human, Mouse
Host:	Rabbit
Isotype:	IgG
Clonality:	Polyclonal
Immunogen:	The immunogen for anti-ZEB2 Antibody: A synthesized peptide derived from human ZEB2
Formulation:	Rabbit IgG in phosphate buffered saline , pH 7.4, 150mM NaCl, 0.02% sodium azide and 50% glycerol.Store at -20 ?.Stable for 12 months from date of receipt
Concentration:	lot specific
Purification:	Immunogen affinity purified
Conjugation:	Unconjugated
Storage:	Store at -20°C as received.
Stability:	Stable for 12 months from date of receipt.
Predicted Protein Size:	136 kDa.
Gene Name:	zinc finger E-box binding homeobox 2
Database Link:	NP_001165124 Entrez Gene 24136 Mouse Entrez Gene 9839 Human O60315
Background:	Transcriptional inhibitor that binds to DNA sequence 5'-CACCT-3' in different promoters. Represses transcription of E-cadherin.
Synonyms:	HSPC082; SIP-1; SIP1; SMADIP1; ZFH1B
Note:	ZEB2 Antibody detects endogenous levels of total ZEB2
Protein Families:	Druggable Genome, Transcription Factors



[View online »](#)

Product images:

Western blot analysis of ZEB2 expression in HepG2 cell lysate