

## Product datasheet for **TA347949**

### Cytochrome b5 (CYB5A) Rabbit Polyclonal Antibody

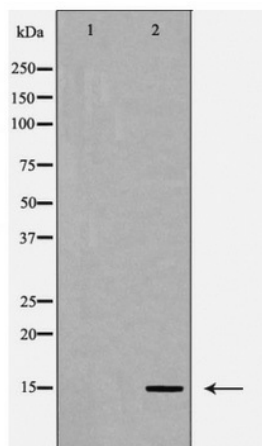
#### Product data:

Product Type:	Primary Antibodies
Applications:	WB
Recommended Dilution:	WB: 1:500-1:2000
Reactivity:	Human, Mouse, Rat
Host:	Rabbit
Isotype:	IgG
Clonality:	Polyclonal
Immunogen:	The immunogen for anti-CYB5 Antibody: A synthesized peptide derived from human CYB5
Formulation:	Rabbit IgG in phosphate buffered saline , pH 7.4, 150mM NaCl, 0.02% sodium azide and 50% glycerol.Store at -20 ?.Stable for 12 months from date of receipt
Concentration:	lot specific
Purification:	Immunogen affinity purified
Conjugation:	Unconjugated
Storage:	Store at -20°C as received.
Stability:	Stable for 12 months from date of receipt.
Predicted Protein Size:	15 kDa
Gene Name:	cytochrome b5 type A
Database Link:	<a href="#">NP_683725</a> <a href="#">Entrez Gene 64001 Rat</a> <a href="#">Entrez Gene 109672 Mouse</a> <a href="#">Entrez Gene 1528 Human</a> <a href="#">P00167</a>
Background:	Defects in CYB5A are the cause of methemoglobinemia CYB5A-related (METHB-CYB5A) [MIM:250790]. A form of methemoglobinemia, a hematologic disease characterized by the presence of excessive amounts of methemoglobin in blood cells, resulting in decreased oxygen carrying capacity of the blood, cyanosis and hypoxia.
Synonyms:	CYB5; MCB5
Note:	CYB5 Antibody detects endogenous levels of total CYB5
Protein Families:	Transmembrane



[View online »](#)

## Product images:



Western blot analysis of CYB5 expression in A549 cells