

Product datasheet for **TA347948**

Eph receptor B4 (EPHB4) Rabbit Polyclonal Antibody

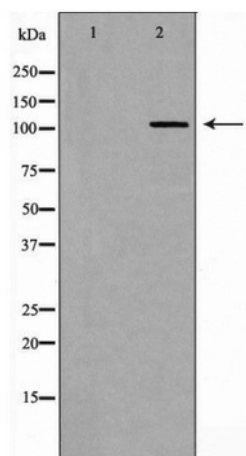
Product data:

Product Type:	Primary Antibodies
Applications:	WB
Recommended Dilution:	WB: 1:500-1:2000
Reactivity:	Human, Mouse
Host:	Rabbit
Isotype:	IgG
Clonality:	Polyclonal
Immunogen:	The immunogen for anti-EPHB4 Antibody: A synthesized peptide derived from human EPHB4
Formulation:	Rabbit IgG in phosphate buffered saline , pH 7.4, 150mM NaCl, 0.02% sodium azide and 50% glycerol.Store at -20 ?.Stable for 12 months from date of receipt
Concentration:	lot specific
Purification:	Immunogen affinity purified
Conjugation:	Unconjugated
Storage:	Store at -20°C as received.
Stability:	Stable for 12 months from date of receipt.
Predicted Protein Size:	108 kDa
Gene Name:	EPH receptor B4
Database Link:	NP_004435 Entrez Gene 13846 Mouse Entrez Gene 2050 Human P54760
Background:	Receptor for members of the ephrin-B family. Binds to ephrin-B2. May have a role in events mediating differentiation and development.
Synonyms:	HTK; MYK1; TYRO11
Note:	EPHB4 Antibody detects endogenous levels of total EPHB4
Protein Families:	Druggable Genome, Protein Kinase, Transmembrane
Protein Pathways:	Axon guidance



[View online »](#)

Product images:



Western blot analysis of EPHB4 expression in 293 cell extract