

Product datasheet for **TA347947**

KEAP1 Rabbit Polyclonal Antibody

Product data:

Product Type:	Primary Antibodies
Applications:	WB
Recommended Dilution:	WB: 1:500-1:2000
Reactivity:	Human, Mouse, Rat
Host:	Rabbit
Isotype:	IgG
Clonality:	Polyclonal
Immunogen:	The immunogen for anti-Keap1 Antibody: A synthesized peptide derived from human Keap1
Formulation:	Rabbit IgG in phosphate buffered saline , pH 7.4, 150mM NaCl, 0.02% sodium azide and 50% glycerol.Store at -20 ?.Stable for 12 months from date of receipt
Concentration:	lot specific
Purification:	Immunogen affinity purified
Conjugation:	Unconjugated
Storage:	Store at -20°C as received.
Stability:	Stable for 12 months from date of receipt.
Predicted Protein Size:	70 kDa
Gene Name:	kelch like ECH associated protein 1
Database Link:	NP_036421 Entrez Gene 50868 MouseEntrez Gene 117519 RatEntrez Gene 9817 Human Q14145
Background:	Retains NFE2L2/NRF2 in the cytosol. Functions as substrate adapter protein for the E3 ubiquitin ligase complex formed by CUL3 and RBX1. Targets NFE2L2/NRF2 for ubiquitination and degradation by the proteasome, thus resulting in the suppression of its transcriptional activity and the repression of antioxidant response element-mediated detoxifying enzyme gene expression.
Synonyms:	INrf2; KLHL19
Note:	Keap1 Antibody detects endogenous levels of total Keap1

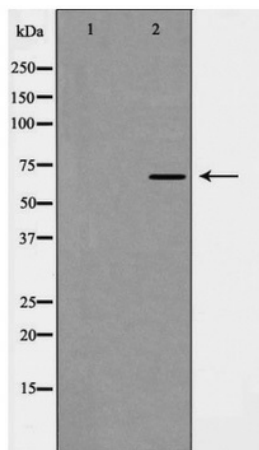


[View online »](#)

Protein Families: Transcription Factors

Protein Pathways: Ubiquitin mediated proteolysis

Product images:



Western blot analysis of Keap1 expression in NIH 3T3 lysate