

## Product datasheet for **TA347943**

### Eph receptor A1 (EPHA1) Rabbit Polyclonal Antibody

#### Product data:

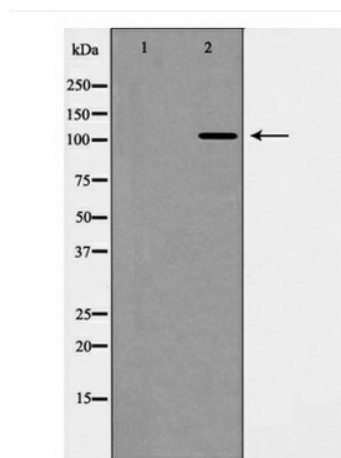
Product Type:	Primary Antibodies
Applications:	WB
Recommended Dilution:	WB: 1:500-1:2000
Reactivity:	Human
Host:	Rabbit
Isotype:	IgG
Clonality:	Polyclonal
Immunogen:	The immunogen for anti-EPHA1 Antibody: A synthesized peptide derived from human EPHA1
Formulation:	Rabbit IgG in phosphate buffered saline , pH 7.4, 150mM NaCl, 0.02% sodium azide and 50% glycerol.Store at -20 ?.Stable for 12 months from date of receipt
Concentration:	lot specific
Purification:	Immunogen affinity purified
Conjugation:	Unconjugated
Storage:	Store at -20°C as received.
Stability:	Stable for 12 months from date of receipt.
Predicted Protein Size:	108 kDa
Gene Name:	EPH receptor A1
Database Link:	<a href="#">NP_005223</a> <a href="#">Entrez Gene 2041 Human P21709</a>
Background:	The Eph family of receptors comprises the largest known family of receptor tyrosine kinases. Ligands of Eph family receptors are structurally related membrane-bound proteins that can be subdivided into two major subclasses, ephrin-A and ephrin-B. Expression of Eph receptors is tissue specific and appears to be tied to developmental events.
Synonyms:	EPH; EPHT; EPHT1
Note:	EPHA1 Antibody detects endogenous levels of total EPHA1
Protein Families:	Druggable Genome, Protein Kinase, Transmembrane



[View online »](#)

Protein Pathways: Axon guidance

### Product images:



Western blot analysis of EPHA1 expression in COLO205 cells