

## Product datasheet for **TA347942**

### SIRT2 Rabbit Polyclonal Antibody

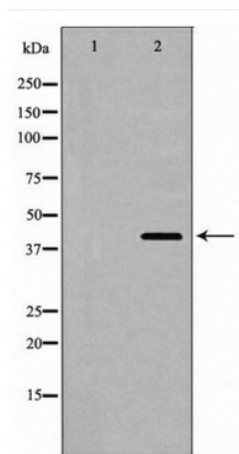
#### Product data:

Product Type:	Primary Antibodies
Applications:	WB
Reactivity:	Human, Mouse, Rat
Host:	Rabbit
Isotype:	IgG
Clonality:	Polyclonal
Immunogen:	The immunogen for anti-SIRT2 Antibody: A synthesized peptide derived from human SIRT2
Formulation:	Rabbit IgG in phosphate buffered saline , pH 7.4, 150mM NaCl, 0.02% sodium azide and 50% glycerol.Store at -20 ?.Stable for 12 months from date of receipt
Concentration:	lot specific
Purification:	Immunogen affinity purified
Conjugation:	Unconjugated
Storage:	Store at -20°C as received.
Stability:	Stable for 12 months from date of receipt.
Predicted Protein Size:	43 kDa
Gene Name:	sirtuin 2
Database Link:	<a href="#">NP_036369</a> <a href="#">Entrez Gene 64383 Mouse</a> <a href="#">Entrez Gene 361532 Rat</a> <a href="#">Entrez Gene 22933 Human</a> <a href="#">Q8IXJ6</a>
Background:	NAD-dependent protein deacetylase, which deacetylates the 'Lys-40' of alpha-tubulin. Involved in the control of mitotic exit in the cell cycle, probably via its role in the regulation of cytoskeleton.
Synonyms:	SIR2; SIR2L; SIR2L2
Note:	SIRT2 Antibody detects endogenous levels of total SIRT2
Protein Families:	Druggable Genome, Transcription Factors



[View online »](#)

## Product images:



Western blot analysis of SIRT2 expression in 293 cells