

## Product datasheet for **TA347941**

### NOTCH2 Rabbit Polyclonal Antibody

#### Product data:

Product Type:	Primary Antibodies
Applications:	WB
Recommended Dilution:	WB: 1:500-1:2000
Reactivity:	Human, Mouse, Rat
Host:	Rabbit
Isotype:	IgG
Clonality:	Polyclonal
Immunogen:	The immunogen for anti-NOTCH2 (Cleaved-Ala1734) Antibody: A synthesized peptide derived from human NOTCH2 (Cleaved-Ala1734)
Formulation:	Rabbit IgG in phosphate buffered saline , pH 7.4, 150mM NaCl, 0.02% sodium azide and 50% glycerol.Store at -20 ?.Stable for 12 months from date of receipt
Concentration:	lot specific
Purification:	Immunogen affinity purified
Conjugation:	Unconjugated
Storage:	Store at -20°C as received.
Stability:	Stable for 12 months from date of receipt.
Predicted Protein Size:	110 kDa
Gene Name:	notch 2
Database Link:	<a href="#">NP_001186930</a> <a href="#">Entrez Gene 18129 Mouse</a> <a href="#">Entrez Gene 29492 Rat</a> <a href="#">Entrez Gene 4853 Human</a> <a href="#">Q04721</a>
Background:	Functions as a receptor for membrane-bound ligands Jagged1, Jagged2 and Delta1 to regulate cell-fate determination. Upon ligand activation through the released notch intracellular domain (NICD) it forms a transcriptional activator complex with RBPJ/RBPSUH and activates genes of the enhancer of split locus.
Synonyms:	AGS2; HJCYS; hN2



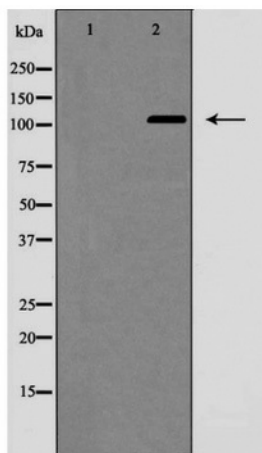
[View online »](#)

**Note:** NOTCH2 (Cleaved-Ala1734) Antibody detects endogenous levels of total NOTCH2 (Cleaved-Ala1734)

**Protein Families:** Druggable Genome, Transmembrane

**Protein Pathways:** Dorso-ventral axis formation, Notch signaling pathway

**Product images:**



Western blot analysis of NOTCH2 (Cleaved-Ala1734) expression in Jurkat cells, treated with etoposide