

Product datasheet for **TA347940**

Eph receptor A3 (EPHA3) Rabbit Polyclonal Antibody

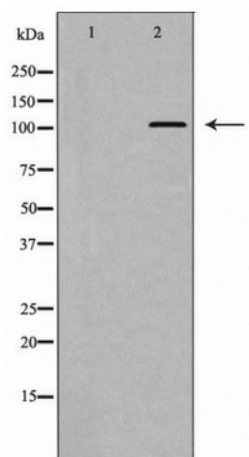
Product data:

Product Type:	Primary Antibodies
Applications:	WB
Recommended Dilution:	WB: 1:500-1:2000
Reactivity:	Human, Mouse, Rat
Host:	Rabbit
Isotype:	IgG
Clonality:	Polyclonal
Immunogen:	The immunogen for anti-EPHA3 Antibody: A synthesized peptide derived from human EPHA3
Formulation:	Rabbit IgG in phosphate buffered saline , pH 7.4, 150mM NaCl, 0.02% sodium azide and 50% glycerol.Store at -20 ?.Stable for 12 months from date of receipt
Concentration:	lot specific
Purification:	Immunogen affinity purified
Conjugation:	Unconjugated
Storage:	Store at -20°C as received.
Stability:	Stable for 12 months from date of receipt.
Predicted Protein Size:	110 kDa
Gene Name:	EPH receptor A3
Database Link:	NP_005224 Entrez Gene 13837 Mouse Entrez Gene 29210 Rat Entrez Gene 2042 Human P29320
Background:	Receptor for members of the ephrin-A family. Binds to ephrin-A2, -A3, -A4 and -A5. Could play a role in lymphoid function.
Synonyms:	EK4; ETK; ETK1; HEK; HEK4; TYRO4
Note:	EPHA3 Antibody detects endogenous levels of total EPHA3
Protein Families:	Druggable Genome, Protein Kinase, Secreted Protein, Transmembrane
Protein Pathways:	Axon guidance



[View online »](#)

Product images:



Western blot analysis of EPHA3 expression in 293 cells.