

Product datasheet for **TA347939**

SLC16A3 Rabbit Polyclonal Antibody

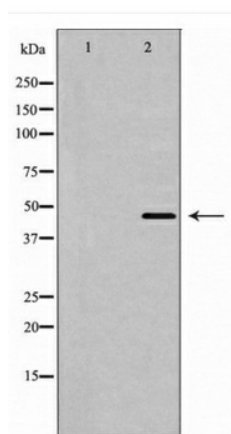
Product data:

Product Type:	Primary Antibodies
Applications:	WB
Recommended Dilution:	WB: 1:500-1:2000
Reactivity:	Human, Mouse, Rat
Host:	Rabbit
Isotype:	IgG
Clonality:	Polyclonal
Immunogen:	The immunogen for anti-MOT4 Antibody: A synthesized peptide derived from human MOT4
Formulation:	Rabbit IgG in phosphate buffered saline , pH 7.4, 150mM NaCl, 0.02% sodium azide and 50% glycerol.Store at -20 ?.Stable for 12 months from date of receipt
Concentration:	lot specific
Purification:	Immunogen affinity purified
Conjugation:	Unconjugated
Storage:	Store at -20°C as received.
Stability:	Stable for 12 months from date of receipt.
Predicted Protein Size:	47 kDa
Gene Name:	solute carrier family 16 member 3
Database Link:	NP_001035887 Entrez Gene 80878 Rat Entrez Gene 80879 Mouse Entrez Gene 9123 Human Q15427
Background:	Belongs to the protein kinase superfamily. STE Ser/Thr protein kinase family. STE20 subfamily
Synonyms:	MCT-3; MCT-4; MCT 3; MCT3; MCT 4; MCT4
Note:	MOT4 Antibody detects endogenous levels of total MOT4
Protein Families:	Transmembrane



[View online »](#)

Product images:



Western blot analysis of MOT4 expression in HeLa lysate