

## Product datasheet for **TA347938**

### VEGFB Rabbit Polyclonal Antibody

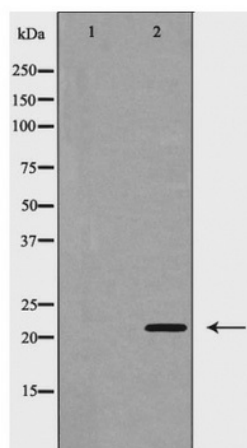
#### Product data:

Product Type:	Primary Antibodies
Applications:	WB
Recommended Dilution:	WB: 1:500-1:2000
Reactivity:	Human, Mouse, Rat
Host:	Rabbit
Isotype:	IgG
Clonality:	Polyclonal
Immunogen:	The immunogen for anti-VEGFB Antibody: A synthesized peptide derived from human VEGFB
Formulation:	Rabbit IgG in phosphate buffered saline , pH 7.4, 150mM NaCl, 0.02% sodium azide and 50% glycerol.Store at -20 ?.Stable for 12 months from date of receipt
Concentration:	lot specific
Purification:	Immunogen affinity purified
Conjugation:	Unconjugated
Storage:	Store at -20°C as received.
Stability:	Stable for 12 months from date of receipt.
Predicted Protein Size:	22 kDa
Gene Name:	vascular endothelial growth factor B
Database Link:	<a href="#">NP_003368</a> <a href="#">Entrez Gene 22340 MouseEntrez Gene 89811 RatEntrez Gene 7423 Human P49765</a>
Background:	Growth factor for endothelial cells. VEGF-B167 binds heparin and neuropilin-1 whereas the binding to neuropilin-1 of VEGF-B186 is regulated by proteolysis.
Synonyms:	VEGFL; VRF
Note:	VEGFB Antibody detects endogenous levels of total VEGFB
Protein Families:	Druggable Genome, Secreted Protein
Protein Pathways:	Bladder cancer, Cytokine-cytokine receptor interaction, Focal adhesion, mTOR signaling pathway, Pancreatic cancer, Pathways in cancer, Renal cell carcinoma



[View online »](#)

## Product images:



Western blot analysis of VEGFB expression in Jurkat cells