

Product datasheet for **TA347937**

EZH1 Rabbit Polyclonal Antibody

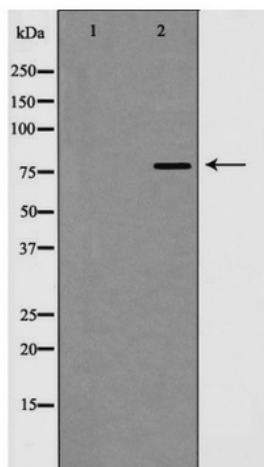
Product data:

Product Type:	Primary Antibodies
Applications:	WB
Recommended Dilution:	WB: 1:500-1:2000
Reactivity:	Human, Mouse, Rat
Host:	Rabbit
Isotype:	IgG
Clonality:	Polyclonal
Immunogen:	The immunogen for anti-EZH1 Antibody: A synthesized peptide derived from human EZH1
Formulation:	Rabbit IgG in phosphate buffered saline , pH 7.4, 150mM NaCl, 0.02% sodium azide and 50% glycerol.Store at -20 ?.Stable for 12 months from date of receipt
Concentration:	lot specific
Purification:	Immunogen affinity purified
Conjugation:	Unconjugated
Storage:	Store at -20°C as received.
Stability:	Stable for 12 months from date of receipt.
Predicted Protein Size:	85 kDa
Gene Name:	enhancer of zeste 1 polycomb repressive complex 2 subunit
Database Link:	NP_001982 Entrez Gene 14055 MouseEntrez Gene 303547 RatEntrez Gene 2145 Human Q92800
Background:	Polycomb group (PcG) protein. Catalytic subunit of the PRC2/EED-EZH1 complex, which methylates 'Lys-27' of histone H3, leading to transcriptional repression of the affected target gene. Able to mono-, di- and trimethylate 'Lys-27' of histone H3 to form H3K27me1, H3K27me2 and H3K27me3, respectively.
Synonyms:	KMT6B
Note:	EZH1 Antibody detects endogenous levels of total EZH1
Protein Families:	Druggable Genome, Transcription Factors



[View online »](#)

Product images:



Western blot analysis of EZH1 expression in A549 cells