

## Product datasheet for **TA347936**

### ACTN2 Rabbit Polyclonal Antibody

#### Product data:

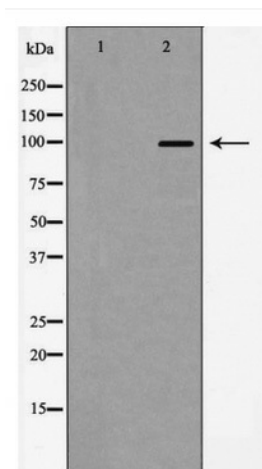
Product Type:	Primary Antibodies
Applications:	WB
Recommended Dilution:	WB: 1:500-1:2000
Reactivity:	Human, Mouse, Rat
Host:	Rabbit
Isotype:	IgG
Clonality:	Polyclonal
Immunogen:	The immunogen for anti-Actinin a 2/3 Antibody: A synthesized peptide derived from human Actinin a 2/3
Formulation:	Rabbit IgG in phosphate buffered saline , pH 7.4, 150mM NaCl, 0.02% sodium azide and 50% glycerol.Store at -20 ?.Stable for 12 months from date of receipt
Concentration:	lot specific
Purification:	Immunogen affinity purified
Conjugation:	Unconjugated
Storage:	Store at -20°C as received.
Stability:	Stable for 12 months from date of receipt.
Predicted Protein Size:	103 kDa
Gene Name:	actinin alpha 2
Database Link:	<a href="#">NP_001094</a> <a href="#">Entrez Gene 11472 Mouse</a> <a href="#">Entrez Gene 291245 Rat</a> <a href="#">Entrez Gene 88 Human</a> <a href="#">P35609</a>
Background:	F-actin cross-linking protein which is thought to anchor actin to a variety of intracellular structures. This is a bundling protein.
Synonyms:	CMD1AA
Note:	Actinin a 2/3 Antibody detects endogenous levels of total Actinin a 2/3



[View online »](#)

**Protein Pathways:** Adherens junction, Arrhythmogenic right ventricular cardiomyopathy (ARVC), Focal adhesion, Leukocyte transendothelial migration, Regulation of actin cytoskeleton, Systemic lupus erythematosus, Tight junction

**Product images:**



Western blot analysis of Actinin a 2/3 expression in HeLa cells