

Product datasheet for **TA347935**

Eph receptor B2 (EPHB2) Rabbit Polyclonal Antibody

Product data:

Product Type:	Primary Antibodies
Applications:	WB
Recommended Dilution:	WB: 1:500-1:2000
Reactivity:	Human
Host:	Rabbit
Isotype:	IgG
Clonality:	Polyclonal
Immunogen:	The immunogen for anti-EPHB2 Antibody: A synthesized peptide derived from human EPHB2
Formulation:	Rabbit IgG in phosphate buffered saline , pH 7.4, 150mM NaCl, 0.02% sodium azide and 50% glycerol.Store at -20 ?.Stable for 12 months from date of receipt
Concentration:	lot specific
Purification:	Immunogen affinity purified
Conjugation:	Unconjugated
Storage:	Store at -20°C as received.
Stability:	Stable for 12 months from date of receipt.
Predicted Protein Size:	117 kDa
Gene Name:	EPH receptor B2
Database Link:	NP_004433 Entrez Gene 2048 Human P29323
Background:	Receptor tyrosine kinase which binds promiscuously transmembrane ephrin-B family ligands residing on adjacent cells, leading to contact-dependent bidirectional signaling into neighboring cells. The signaling pathway downstream of the receptor is referred to as forward signaling while the signaling pathway downstream of the ephrin ligand is referred to as reverse signaling.
Synonyms:	CAPB; DRT; EK5; EPHT3; ERK; Hek5; PCBC; Tyro5
Note:	EPHB2 Antibody detects endogenous levels of total EPHB2

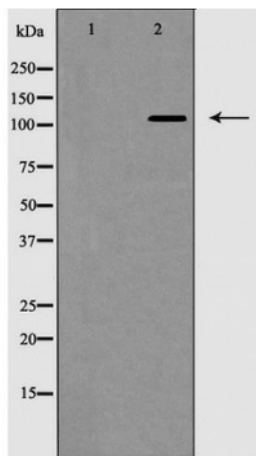


[View online »](#)

Protein Families: Druggable Genome, Protein Kinase, Transmembrane

Protein Pathways: Axon guidance

Product images:



Western blot analysis of EPHB2 expression in Jurkat cells