

Product datasheet for **TA347934**

Metabotropic Glutamate Receptor 5 (GRM5) Rabbit Polyclonal Antibody

Product data:

Product Type:	Primary Antibodies
Applications:	WB
Recommended Dilution:	WB: 1:500-1:1000
Reactivity:	Human, Mouse, Rat
Host:	Rabbit
Isotype:	IgG
Clonality:	Polyclonal
Immunogen:	The immunogen for anti-GRM5 Antibody: A synthesized peptide derived from internal of human GRM5.
Formulation:	Rabbit IgG in phosphate buffered saline , pH 7.4, 150mM NaCl, 0.02% sodium azide and 50% glycerol.Store at -20 ?.Stable for 12 months from date of receipt
Concentration:	lot specific
Purification:	Immunogen affinity purified
Conjugation:	Unconjugated
Storage:	Store at -20°C as received.
Stability:	Stable for 12 months from date of receipt.
Predicted Protein Size:	120kd
Gene Name:	glutamate metabotropic receptor 5
Database Link:	NP_001137303 Entrez Gene 24418 Rat Entrez Gene 108071 Mouse Entrez Gene 2915 Human P41594
Background:	G-protein coupled receptor for glutamate. Ligand binding causes a conformation change that triggers signaling via guanine nucleotide-binding proteins (G proteins) and modulates the activity of down-stream effectors. Signaling activates a phosphatidylinositol-calcium second messenger system and generates a calcium-activated chloride current
Synonyms:	GPRC1E; mGlu5; MGLUR5; PPP1R86
Note:	GRM5 antibody detects endogenous levels of total GRM5 protein.

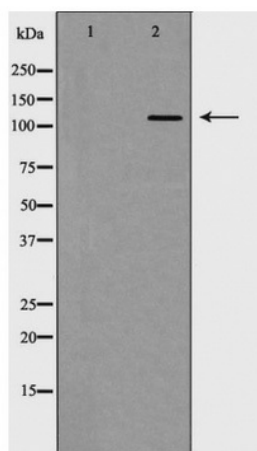


[View online »](#)

Protein Families: Druggable Genome, GPCR, Transmembrane

Protein Pathways: Calcium signaling pathway, Gap junction, Huntington's disease, Long-term depression, Long-term potentiation, Neuroactive ligand-receptor interaction

Product images:



Western blot analysis of GRM5 expression in HT-29 cells