

## Product datasheet for **TA347928**

### DNA polymerase alpha (POLA1) Rabbit Polyclonal Antibody

#### Product data:

Product Type:	Primary Antibodies
Applications:	WB
Recommended Dilution:	WB: 1:500-1:2000
Reactivity:	Human
Host:	Rabbit
Isotype:	IgG
Clonality:	Polyclonal
Immunogen:	The immunogen for anti-DNA Polymerase a Antibody: A synthesized peptide derived from human DNA Polymerase a
Formulation:	Rabbit IgG in phosphate buffered saline , pH 7.4, 150mM NaCl, 0.02% sodium azide and 50% glycerol.Store at -20 ?.Stable for 12 months from date of receipt
Concentration:	lot specific
Purification:	Immunogen affinity purified
Conjugation:	Unconjugated
Storage:	Store at -20°C as received.
Stability:	Stable for 12 months from date of receipt.
Predicted Protein Size:	169 kDa
Gene Name:	polymerase (DNA) alpha 1, catalytic subunit
Database Link:	<a href="#">NP_058633</a> <a href="#">Entrez Gene 5422 Human</a> <a href="#">P09884</a>
Background:	Plays an essential role in the initiation of DNA replication. During the S phase of the cell cycle, the DNA polymerase alpha complex (composed of a catalytic subunit POLA1/p180, a regulatory subunit POLA2/p70 and two primase subunits PRIM1/p49 and PRIM2/p58) is recruited to DNA at the replicative forks via direct interactions with MCM10 and WDHD1. POLA1/p180, a regulatory subunit POLA2/p70 and two primase subunits PRIM1/p49 and PRIM2/p58) is recruited to DNA at the replicative forks via direct interactions with MCM10 and WDHD1.



[View online »](#)

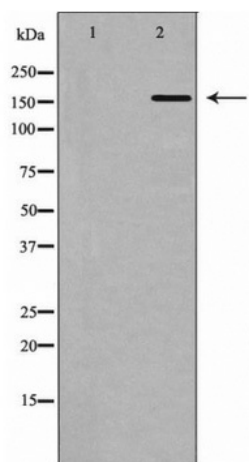
**Synonyms:** NSX; p180; POLA

**Note:** DNA Polymerase a Antibody detects endogenous levels of total DNA Polymerase a

**Protein Families:** Druggable Genome

**Protein Pathways:** DNA replication, Metabolic pathways, Purine metabolism, Pyrimidine metabolism

**Product images:**



Western blot analysis of DNA Polymerase a expression in 293 cells