

Product datasheet for **TA347926**

Eph receptor A5 (EPHA5) Rabbit Polyclonal Antibody

Product data:

Product Type:	Primary Antibodies
Applications:	WB
Recommended Dilution:	WB: 1:500-1:2000
Reactivity:	Human, Mouse, Rat
Host:	Rabbit
Isotype:	IgG
Clonality:	Polyclonal
Immunogen:	The immunogen for anti-EPHA5 Antibody: A synthesized peptide derived from human EPHA5
Formulation:	Rabbit IgG in phosphate buffered saline , pH 7.4, 150mM NaCl, 0.02% sodium azide and 50% glycerol.Store at -20 ?.Stable for 12 months from date of receipt
Concentration:	lot specific
Purification:	Immunogen affinity purified
Conjugation:	Unconjugated
Storage:	Store at -20°C as received.
Stability:	Stable for 12 months from date of receipt.
Predicted Protein Size:	115 kDa
Gene Name:	EPH receptor A5
Database Link:	NP_004430 Entrez Gene 13839 MouseEntrez Gene 79208 RatEntrez Gene 2044 Human P54756
Background:	Receptor tyrosine kinase which binds promiscuously GPI-anchored ephrin-A family ligands residing on adjacent cells, leading to contact-dependent bidirectional signaling into neighboring cells. The signaling pathway downstream of the receptor is referred to as forward signaling while the signaling pathway downstream of the ephrin ligand is referred to as reverse signaling.
Synonyms:	CEK7; EHK-1; EHK1; EK7; HEK7; TYRO4
Note:	EPHA5 Antibody detects endogenous levels of total EPHA5

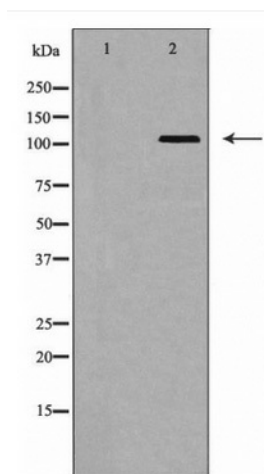


[View online »](#)

Protein Families: Druggable Genome, Protein Kinase, Transmembrane

Protein Pathways: Axon guidance

Product images:



Western blot analysis of EPHA5 expression in HeLa cell lysate