

## Product datasheet for **TA347925S**

### Aquaporin 1 (AQP1) Rabbit Polyclonal Antibody

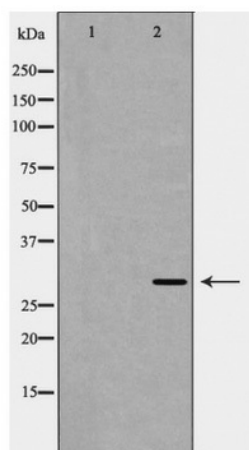
#### Product data:

|                         |   |
|-------------------------|---|
| Product Type:           | Primary Antibodies  |
| Applications:           | WB  |
| Recommended Dilution:   | WB: 1:500-1:2000  |
| Reactivity:             | Human, Mouse, Rat   |
| Host:                   | Rabbit  |
| Isotype:                | IgG   |
| Clonality:              | Polyclonal  |
| Immunogen:              | The immunogen for anti-AQP1 Antibody: A synthesized peptide derived from human AQP1   |
| Formulation:            | Rabbit IgG in phosphate buffered saline , pH 7.4, 150mM NaCl, 0.02% sodium azide and 50% glycerol.Store at -20 ?.Stable for 12 months from date of receipt  |
| Concentration:          | lot specific  |
| Purification:           | Immunogen affinity purified   |
| Conjugation:            | Unconjugated  |
| Storage:                | Store at -20°C as received.   |
| Stability:              | Stable for 12 months from date of receipt.  |
| Predicted Protein Size: | 29 kDa.   |
| Gene Name:              | aquaporin 1 (Colton blood group)  |
| Database Link:          | <a href="#">NP_932766</a><br><a href="#">Entrez Gene 11826 MouseEntrez Gene 25240 RatEntrez Gene 358 Human P29972</a>   |
| Background:             | Forms a water-specific channel that provides the plasma membranes of red cells and kidney proximal tubules with high permeability to water, thereby permitting water to move in the direction of an osmotic gradient. |
| Synonyms:               | AQP-CHIP; CHIP28; CO  |
| Note:                   | AQP1 Antibody detects endogenous levels of total AQP1   |
| Protein Families:       | Druggable Genome, Ion Channels: Other, Transmembrane  |



[View online »](#)

## Product images:



Western blot analysis of AQP1 expression in rat brain