

Product datasheet for **TA347925**

Aquaporin 1 (AQP1) Rabbit Polyclonal Antibody

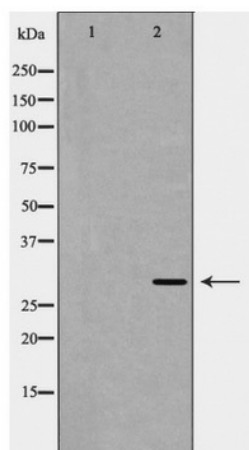
Product data:

Product Type:	Primary Antibodies
Applications:	WB
Recommended Dilution:	WB: 1:500-1:2000
Reactivity:	Human, Mouse, Rat
Host:	Rabbit
Isotype:	IgG
Clonality:	Polyclonal
Immunogen:	The immunogen for anti-AQP1 Antibody: A synthesized peptide derived from human AQP1
Formulation:	Rabbit IgG in phosphate buffered saline , pH 7.4, 150mM NaCl, 0.02% sodium azide and 50% glycerol.Store at -20 ?.Stable for 12 months from date of receipt
Concentration:	lot specific
Purification:	Immunogen affinity purified
Conjugation:	Unconjugated
Storage:	Store at -20°C as received.
Stability:	Stable for 12 months from date of receipt.
Predicted Protein Size:	29 kDa.
Gene Name:	aquaporin 1 (Colton blood group)
Database Link:	NP_932766 Entrez Gene 11826 MouseEntrez Gene 25240 RatEntrez Gene 358 Human P29972
Background:	Forms a water-specific channel that provides the plasma membranes of red cells and kidney proximal tubules with high permeability to water, thereby permitting water to move in the direction of an osmotic gradient.
Synonyms:	AQP-CHIP; CHIP28; CO
Note:	AQP1 Antibody detects endogenous levels of total AQP1
Protein Families:	Druggable Genome, Ion Channels: Other, Transmembrane



[View online »](#)

Product images:



Western blot analysis of AQP1 expression in rat brain