

Product datasheet for **TA347924**

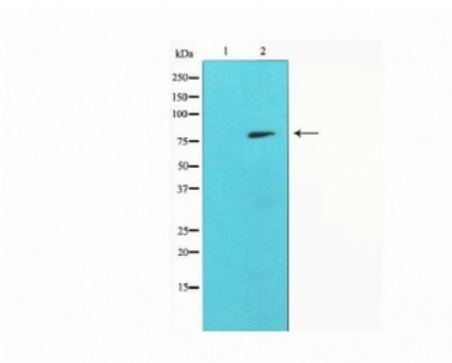
MMP9 Rabbit Polyclonal Antibody

Product data:

Product Type:	Primary Antibodies
Applications:	IHC, WB
Recommended Dilution:	WB: 1:500-1:2000; IHC 1:50-1:200
Reactivity:	Human, Mouse, Rat
Host:	Rabbit
Isotype:	IgG
Clonality:	Polyclonal
Immunogen:	The immunogen for anti-MMP-9 Antibody: A synthesized peptide derived from human MMP-9
Formulation:	Rabbit IgG in phosphate buffered saline , pH 7.4, 150mM NaCl, 0.02% sodium azide and 50% glycerol.Store at -20 ?.Stable for 12 months from date of receipt
Concentration:	lot specific
Purification:	Immunogen affinity purified
Conjugation:	Unconjugated
Storage:	Store at -20°C as received.
Stability:	Stable for 12 months from date of receipt.
Predicted Protein Size:	78 kDa
Gene Name:	matrix metalloproteinase 9
Database Link:	NP_004985 Entrez Gene 17395 MouseEntrez Gene 81687 RatEntrez Gene 4318 Human P14780
Background:	May play an essential role in local proteolysis of the extracellular matrix and in leukocyte migration. Could play a role in bone osteoclastic resorption. Cleaves KiSS1 at a Gly-
Synonyms:	CLG4B; GELB; MANDP2; MMP-9
Note:	MMP-9 Antibody detects endogenous levels of total MMP-9
Protein Families:	Druggable Genome, Protease
Protein Pathways:	Bladder cancer, Leukocyte transendothelial migration, Pathways in cancer

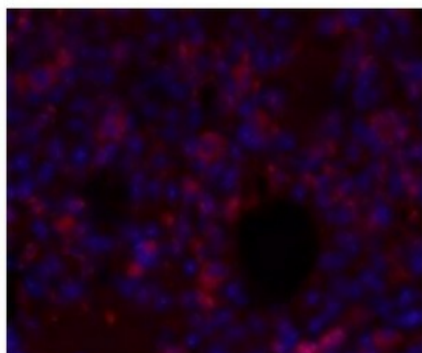


[View online »](#)

Product images:

Western blot analysis on HepG2 cell lysate using MMP9 antibody, The lane on the left is treated with the antigen-specific peptide.

Western blot analysis on HepG2 cell lysate using MMP9 antibody, the lane on the left is treated with the antigen-specific peptide.



Immunohistochemistry (Formalin/PFA-fixed paraffin-embedded sections) analysis on Mouse lung Tissue sections.

Immunohistochemistry (Formalin/PFA-fixed paraffin-embedded sections) analysis on mouse lung tissues sections.