

## Product datasheet for **TA347923**

### INSL3 Rabbit Polyclonal Antibody

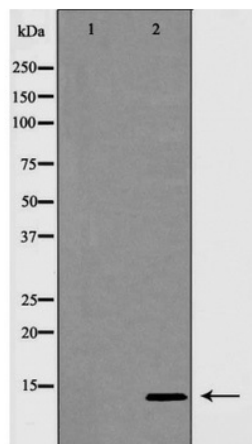
#### Product data:

Product Type:	Primary Antibodies
Applications:	WB
Recommended Dilution:	WB: 1:500-1:2000
Reactivity:	Human
Host:	Rabbit
Isotype:	IgG
Clonality:	Polyclonal
Immunogen:	The immunogen for anti-INSL3 Antibody: A synthesized peptide derived from human INSL3
Formulation:	Rabbit IgG in phosphate buffered saline , pH 7.4, 150mM NaCl, 0.02% sodium azide and 50% glycerol.Store at -20 ?.Stable for 12 months from date of receipt
Concentration:	lot specific
Purification:	Immunogen affinity purified
Conjugation:	Unconjugated
Storage:	Store at -20°C as received.
Stability:	Stable for 12 months from date of receipt.
Predicted Protein Size:	14 kDa
Gene Name:	insulin like 3
Database Link:	<a href="#">NP_005534</a> <a href="#">Entrez Gene 3640 Human</a> <a href="#">P51460</a>
Background:	Seems to play a role in testicular function. May be a trophic hormone with a role in testicular descent in fetal life. Is a ligand for LGR8 receptor. Heterodimer of a B chain and an A chain linked by two disulfide bonds
Synonyms:	ley-I-L; RLF; RLNL
Note:	INSL3 Antibody detects endogenous levels of total INSL3
Protein Families:	Druggable Genome, Secreted Protein



[View online »](#)

## Product images:



Western blot analysis of INSL3 expression in MCF7 cells